

(Published in *The Butler County Times-Gazette*  
and at [www.andoverks.com](http://www.andoverks.com) on January 21 2023)

### RESOLUTION NO. 23-01

A RESOLUTION DECLARING THE NECESSITY TO APPROPRIATE PRIVATE PROPERTY FOR THE USE OF THE CITY OF ANDOVER, KANSAS; AUTHORIZING A SURVEY AND DESCRIPTION OF THE LAND OR INTEREST TO BE CONDEMNED BY A LICENSED SURVEYOR OR PROFESSIONAL ENGINEER; DIRECTING THE FILING OF THE SURVEY AND DESCRIPTION WITH THE CITY CLERK AND THE PUBLICATION OF THIS RESOLUTION ONCE IN THE OFFICIAL CITY NEWSPAPER, PURSUANT TO K.S.A. 26-201.

WHEREAS, pursuant to K.S.A. 26-201, the Governing Body of the City of Andover, Kansas (the "City") desires to declare the necessity to appropriate private property for the use of the City by condemnation;

NOW, THEREFORE, BE IT RESOLVED BY THE GOVERNING BODY OF THE CITY OF ANDOVER, KANSAS:

1. The City finds it necessary to appropriate private property for use by the City in the "Founders Parkway" development in Lot 1, Block A, Re-Plat of Part of Prairie Star Addition, Andover, Butler County, Kansas; and
2. The City hereby authorizes a survey and description of the land or interest to be condemned by a licensed surveyor or professional engineer; and
3. The City hereby directs the survey and description of the land or interest to be condemned be filed with the City Clerk and published once in the Butler County Times-Gazette and at <https://www.andoverks.com>.

PASSED, ADOPTED and APPROVED by the governing body of the City of Andover, Kansas this 10<sup>th</sup> day of January 2023.



ATTEST:

CITY OF ANDOVER, KANSAS

Ronnie Price, Mayor

Susan C. Renner, City Clerk

# EXHIBIT

LOT EXHIBIT

OWNER: CHOLAR POTHE LLC

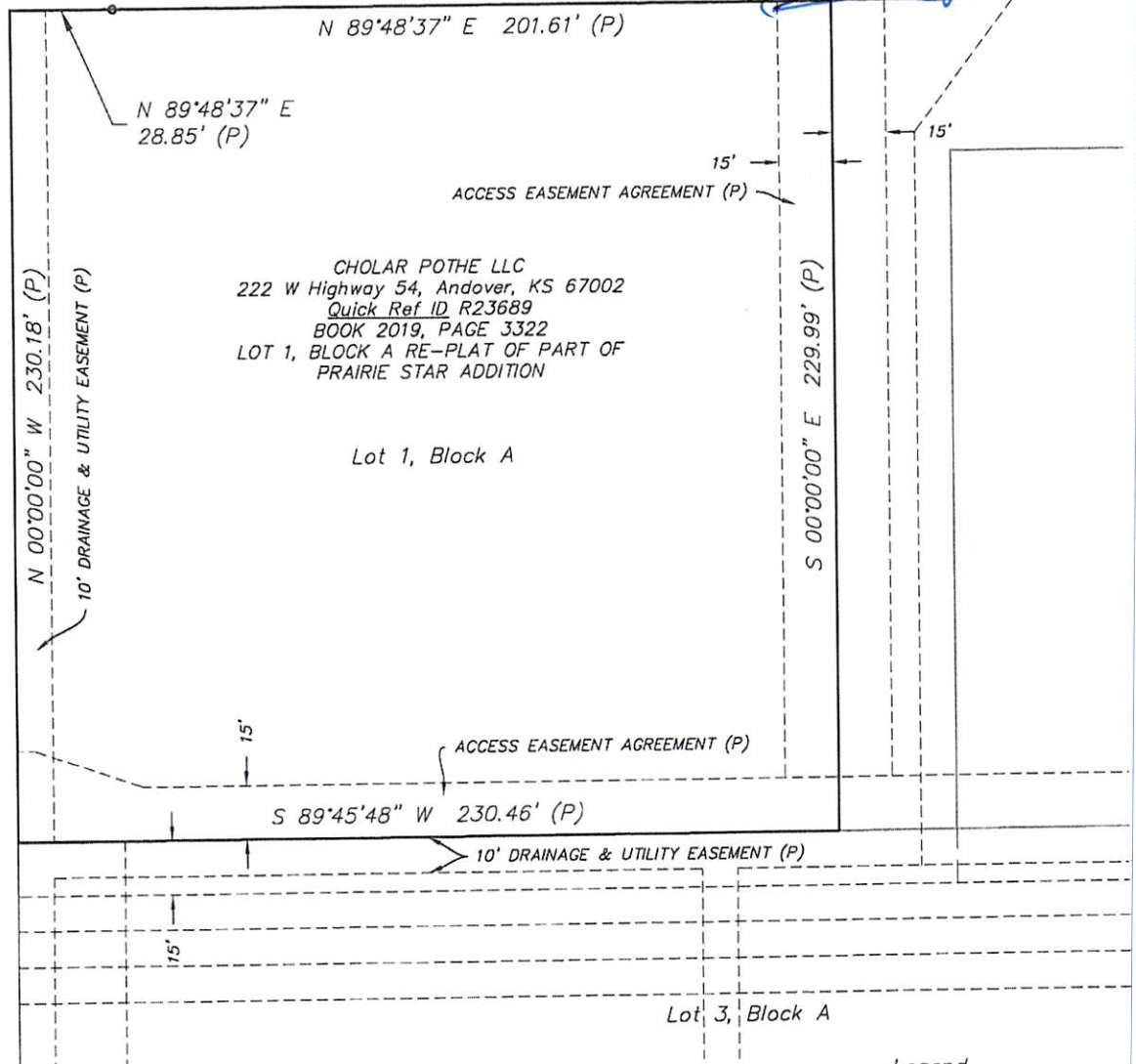
Quick Ref ID R23689

RECEIVED  
City Clerk's Office

JAN 24 2023

City Clerk

By

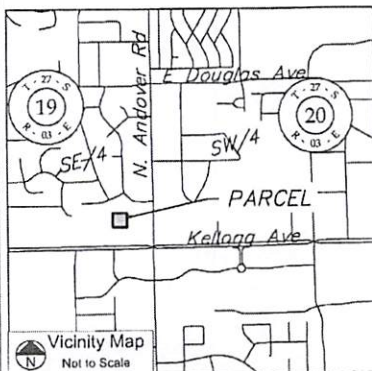


## Legend

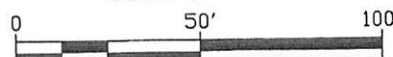
- Parcel Tract Line
- Adjoiner Lot Line
- Building Setback (P)
- Easement Line (P)
- (P) Per Plat

## SURVEY NOTES:

1. Basis of Bearings: The West line of Lot 1, Block A being N 00°00'00\"W.
2. See Page 2 for Description
3. This is an exhibit of a parcel and does not constitute a Boundary survey and is subject to any inaccuracies that a subsequent boundary survey may disclose.



Scale: 1" = 50'



TranSystems

EXPERIENCE | Transportation

## MERESTONE SURVEYING LLC



1611 N. Andover Rd  
Andover, KS 67002  
PH: (316) 425-7770  
FAX: (316) 425-7773  
www.merestoncks.com  
CLS-179 (KS), CA #6901 (OK)

Lot 1, Block 1  
REPLAT OF PART OF PRAIRIE STAR ADD  
ANDOVER, BUTLER COUNTY, KANSAS

LOT EXHIBIT  
OWNER: CHOLAR POTHE LLC  
Quick Ref ID R23689

Date: 12/21/22  
Draft: TPH  
Aprvd: BLP  
Scale: As Noted  
Job #: 22-10-295  
Sheet #: 1 OF 2

# EXHIBIT

LOT EXHIBIT

OWNER: CHOLAR POTHE LLC

Quick Ref ID R23689

RECEIVED  
City Clerk's Office

JAN 24 2023

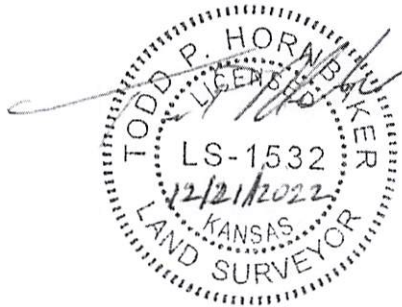
By City Clerk

## LOT EXHIBIT DESCRIPTION

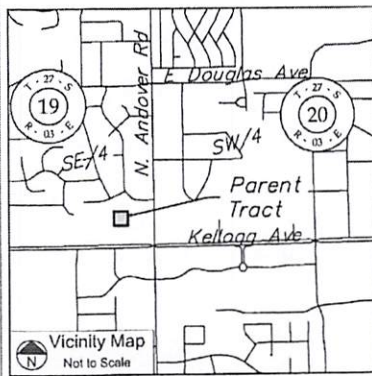
LOT 1, BLOCK A, RE-PLAT OF PART OF PRAIRIE STAR ADDITION, ANDOVER, BUTLER COUNTY, KANSAS.

## CERTIFICATION

- This is to certify that the above description and survey on page 1 was prepared by me or under my direct supervision.



Todd P. Hornbaker  
P.S. #1532, State of Kansas  
Merestone Surveying LLC, CLS-179



**TranSystems**  
EXPERIENCE | Transportation

### MERESTONE SURVEYING LLC



1641 N. Andover Rd  
Andover, KS 67002  
PH (316) 425-7770  
FAX (316) 425-7773  
www.merestoneks.com  
CLS-179 (KS), CA #6901 (OK)

Lot 1, Block 1  
REPLAT OF PART OF PRAIRIE STAR ADD  
ANDOVER, BUTLER COUNTY, KANSAS

LOT EXHIBIT  
OWNER: CHOLAR POTHE LLC  
Quick Ref ID R23689

Date:	12/21/22
Draft:	TPH
Aprvd:	BLP
Scale:	As Noted
Job #:	22-10-295
Sheet #:	2 OF 2