

(Complete Ordinance published at [www.andoverks.com](http://www.andoverks.com) on May 20, 2023)

## **ORDINANCE NO. 1867**

### **AN ORDINANCE ABANDONING AND REPEALING THE PRELIMINARY PLANNED UNIT DEVELOPMENT PLAN OF CERTAIN LANDS LOCATED IN THE CITY OF ANDOVER, KANSAS, UNDER THE AUTHORITY GRANTED BY THE ZONING REGULATIONS OF THE CITY.**

WHEREAS, the Governing Body of the City of Andover, Kansas (the "City") has received a written notification from the owner of said land to abandon the Ami Lane Addition Preliminary Planned Unit Development Plan established by Ordinance No 1340.

### **NOW, THEREFORE, BE IT ORDAINED BY THE GOVERNING BODY OF THE CITY OF ANDOVER, BUTLER COUNTY, STATE OF KANSAS:**

Section 1. The Zoning Regulations of the City of Andover, Kansas are hereby amended to abandon and repeal the Ami Lane Addition Preliminary Planned Unit Development Plan as depicted in Exhibit A incorporated herein as follows:

#### **Legal Description**

Lot 1, Block 1, and Reserves A and B, CHANCE ACRES, a part of the Northeast Quarter of Section 7, Township 28 South, Range 3 east of the 6<sup>th</sup> P.M., Butler County, Kansas, TOGETHER with a tract described as follows: Beginning at the Northwest Comer of the Northeast Quarter of the Northeast Quarter of Section 7, Township 28 south, Range 3 East of the 6<sup>th</sup> P.M., in Butler County, Kansas, thence North 90°00'00" East on the North line of said Northeast Quarter of the Northeast Quarter, a distance of 248.03 feet; thence south 1°50'09" West, a distance of 1327.63 feet to the South line of said Northeast Quarter of the Northeast Quarter; thence North 89°47'03" West, a distance of 229.75 feet to the Southwest corner of said Northeast Quarter of the Northeast Quarter; thence North 1°03'28" East, a distance of 1326.30 feet to the point of beginning, TOGETHER with a tract described as follows: Beginning 260 feet North of the southeast Corner of the Northeast Quarter of Section 7, Township 28 South, Range 3 East of the 6<sup>th</sup> P.M.; thence West 435.6 feet; thence north 140 feet; thence East 435.6 feet; thence South 140 feet to beginning in Butler County, Kansas, TOGETHER with a tract described as follows: Beginning at a point 400 feet North and 217.8 feet West of the Southeast corner of the Northeast Quarter of Section 7, Township 28 South, Range 3 East of the 6<sup>th</sup> P.M.; thence West 190 feet; thence North 600 feet; thence east 190 feet; thence South 600 feet to the place of beginning, Butler County, Kansas, TOGETHER with a tract described as follows: Beginning at a point 400 feet North of the Southeast corner of the Northeast Quarter of Section 7, Township 28 South, Range 3 East of the 6<sup>th</sup> P.M.; thence West parallel to the South line of said Northeast Quarter 217.8 feet; thence North 200 feet; thence East 217.8 feet to the point of beginning,

Butler County, Kansas, TOGETHER with the Northwest Quarter of the Southeast Quarter of Section 7, Range 3 East of the 6<sup>th</sup> P.M., in Butler County, Kansas, TOGETHER with a tract described as follows: Beginning at a point on the East line of the Northeast Quarter of Section Numbered 7, Township Numbered 28 South, Range Numbered 3 East of the 6<sup>th</sup> P.M., that bears North 1°04'23" East, a distance of 100.00 feet from the Southeast Corner thereof; thence North 89°47'03" West, parallel to the South line of said Northeast Quarter, a distance of 360.00 feet; thence South 1°04'23" West, a distance of 100.00 feet to said South line; thence North 80°47'03" West on said South line 656.30 feet; thence North 2°00'04" East, a distance of 1,066.36 feet; thence South 87°51'30" East a distance of 564.06 feet; thence south 1°04'23" West, a distance of 47.01 feet; thence South 89°47'03" East, a distance of 27.20 feet; thence south 1°04'23" West, a distance of 600.00 feet; thence South 46°33'13" West, a distance of 48.51 feet; thence South 1°58'54" East, a distance of 103.81 feet; thence South 89°49'10" East, a distance of 436.86 feet to said East line of the Northeast Quarter; thence South 1°04'23" West, a distance of 163.03 feet to the point of beginning in Butler County, Kansas. All being subject to public road.

Section 2. Ordinance No. 1340 is hereby repealed. The zoning classification of the subject property of Butler County RR Rural Residential in effect immediately prior to the publication of Ordinance No. 1340 is hereby reestablished.

Section 3. Upon the taking effect of this Ordinance, the above zoning change shall be entered and shown on the Official Zoning Map(s) as previously adopted by reference and said map is hereby reincorporated as a part of the Zoning Regulations as amended.

Section 4. This Ordinance shall take effect and be in full force from and after its adoption by the Governing Body of the City, approval by the Mayor and publication once in the official newspaper of the City.

*[Remainder of Page Intentionally Left Blank]*

PASSED AND APPROVED by the Governing Body of the City of Andover, Kansas this  
9<sup>th</sup> day of May, 2023.

CITY OF ANDOVER, KANSAS

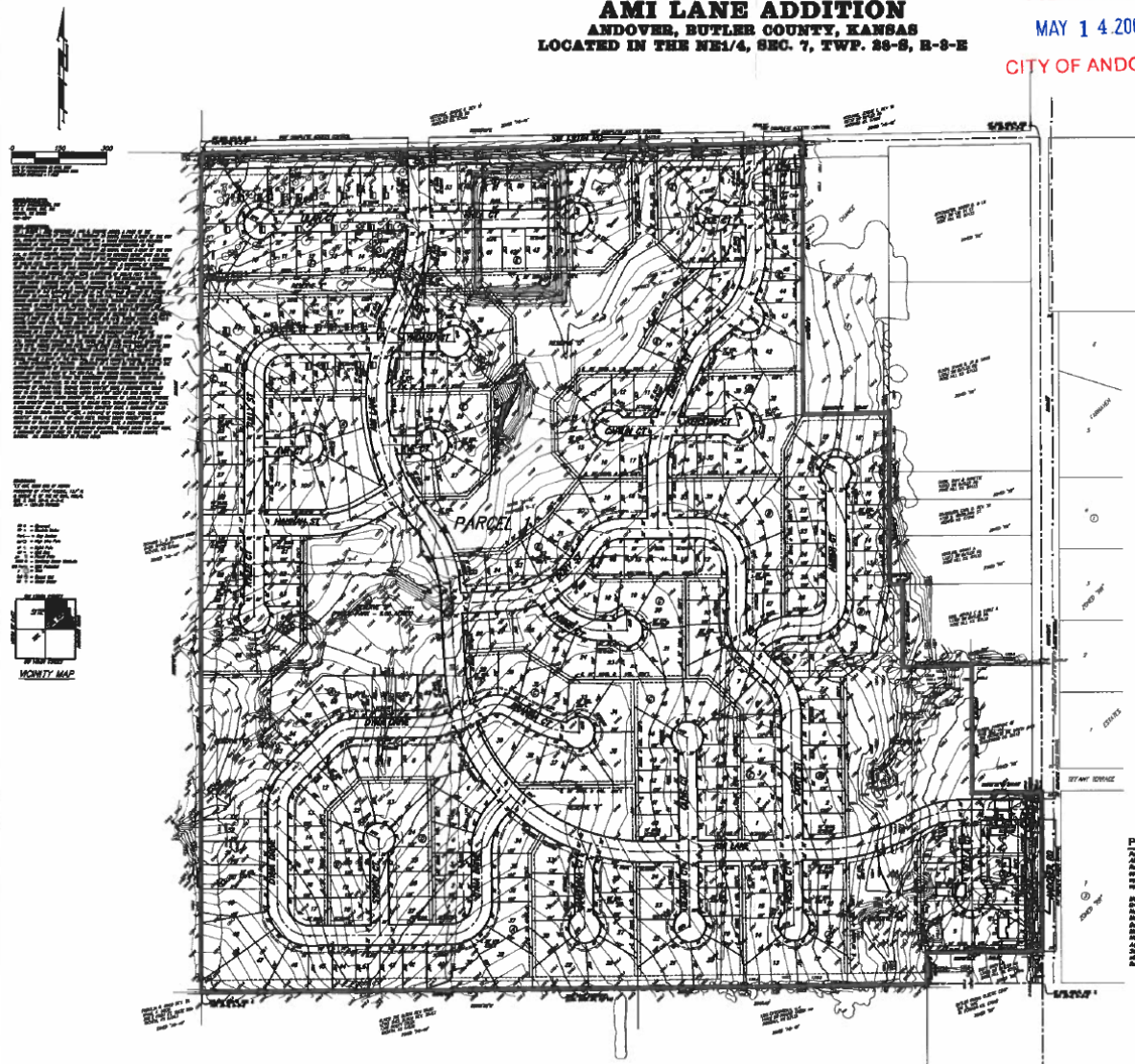
[seal]

By \_\_\_\_\_  
Ronnie Price, Mayor

ATTEST:

By \_\_\_\_\_  
Susan C. Renner, City Clerk

RECEIVED  
MAY 14 2007  
CITY OF ANDOVER



Downloaded from ascelibrary.org by University of California, San Diego on 06/01/15. Copyright ASCE, For All Rights Reserved, No part of this document may be reproduced without written permission from ASCE.

**EXHIBIT A**