

(Ordinance published at www.andoverks.com on August 3, 2024)

ORDINANCE NO. 1917

AN ORDINANCE APPROVING THE RECOMMENDATION OF THE ANDOVER CITY PLANNING COMMISSION AMENDING THE GENERAL PLANNED UNIT DEVELOPMENT PROVISIONS OF CERTAIN LANDS LOCATED IN THE CITY OF ANDOVER, KANSAS, UNDER THE AUTHORITY GRANTED BY THE ZONING REGULATIONS OF THE CITY.

WHEREAS, the Governing Body of the City of Andover, Kansas (the "City") has received a recommendation from the Andover City Planning Commission on Case No. Z-PUD24-0003; and

WHEREAS, the Governing Body finds proper notice was given and a public hearing was held on Case No. Z-PUD24-0003 on June 26, 2024, all as provided by law and under authority and subject to the provisions of the Zoning Regulations of the City.

NOW, THEREFORE, BE IT ORDAINED BY THE GOVERNING BODY OF THE CITY OF ANDOVER, KANSAS:

Section 1. The recommendation of the Planning Commission is hereby approved and the Zoning Regulations of the City of Andover, Kansas are hereby amended to modify the General Provisions of the Cornerstone Planned Unit Development Plan as set forth on Exhibit "A".

Legal Description

A portion of the Southeast Quarter, Section 6, Township 27 South, Range 3 East, of the Sixth Principal Meridian, as prepared by Baughman Company, P.A., CLS 58, State of Kansas, County of Sedgwick, and described as beginning at the South Quarter Section corner of said Section 6; thence coincident with the west line of the Southeast Quarter on a Kansas Coordinate System 1983 South Zone Grid Bearing of N01°17'44"W, 270.03 feet, to the southwest corner of Lot 5, Block 1, THE REVISED CORNERSTONE FIRST ADDITION, an addition to the City of Andover, Butler County, Kansas; thence N89°35'49"E, parallel with and 270.00 feet north of said south line, and coincident with the south line of Lots 1, 2, 3, 4 and 5, Block 1, in THE REVISED CORNERSTONE FIRST ADDITION, 557.04, to a deflection point in the west line of Reserve "B", in THE REVISED CORNERSTONE FIRST ADDITION; thence S00°24'11"E, perpendicular to the south line of the Southeast Quarter of said Section 6, and coincident with the west line of said Reserve "B", 270.00 feet, to a point in the south line of the Southeast Quarter of said Section 6; thence S89°35'49"W, coincident with the south line of the Southeast Quarter of said Section 6, 552.84 feet to the Point of Beginning. Subject to road rights-of-way of record.

AND,

A portion of the Southeast Quarter, Section 6, Township 27 South, Range 3 East, of the Sixth Principal Meridian, as prepared by Baughman Company, P.A., CLS 58, State of Kansas, County of Sedgwick, and described as commencing at the South Quarter Section corner of said Section 6; thence coincident with the south line of the Southeast Quarter on a Kansas Coordinate System 1983 South Zone Grid Bearing of N89°35'49"E, 712.82 feet, to a point 1,600 feet west of the southeast corner of said Section 6, and to the southerly extension of the east line of Reserve "A", THE REVISED CORNERSTONE FIRST ADDITION, an addition to the City of Andover, Butler County, Kansas, and for a point of beginning; thence N01°09'24"W, coincident with the east line of said Reserve "A", 270.02 to a deflection point in the east line of said Reserve "A"; thence N89°35'49"E, parallel with and 270.00 feet north of said south line, coincident with the east line of said Reserve "A", 175.02 feet to a deflection point in the east line of said Reserve "A"; thence S01°09'24"E, coincident with the southerly extension of the east line of said Reserve "A", 270.02 feet to a point in the south line of said Section 6; thence S89°35'49"W, coincident with the south line of said Section 6, 175.02 feet to the point of beginning. Subject to road rights-of-way of record.

General Location

620 W. 21st Street, Andover, Butler County, Kansas

Section 2. Upon the taking effect of this Ordinance, the above zoning change shall be entered and shown on the Official Zoning Map(s) as previously adopted by reference and said map is hereby reincorporated as a part of the Zoning Regulations as amended.

Section 3. This Ordinance shall take effect and be in full force from and after its adoption by the Governing Body of the City, approval by the Mayor and publication once in the official newspaper of the City.

[Remainder of Page Intentionally Left Blank]

PASSED, ADOPTED AND APPROVED by the Governing Body of the City of Andover,
Kansas this 30th day of July, 2024.

CITY OF ANDOVER, KANSAS

[seal]





Ronnie Price, Mayor

ATTEST:



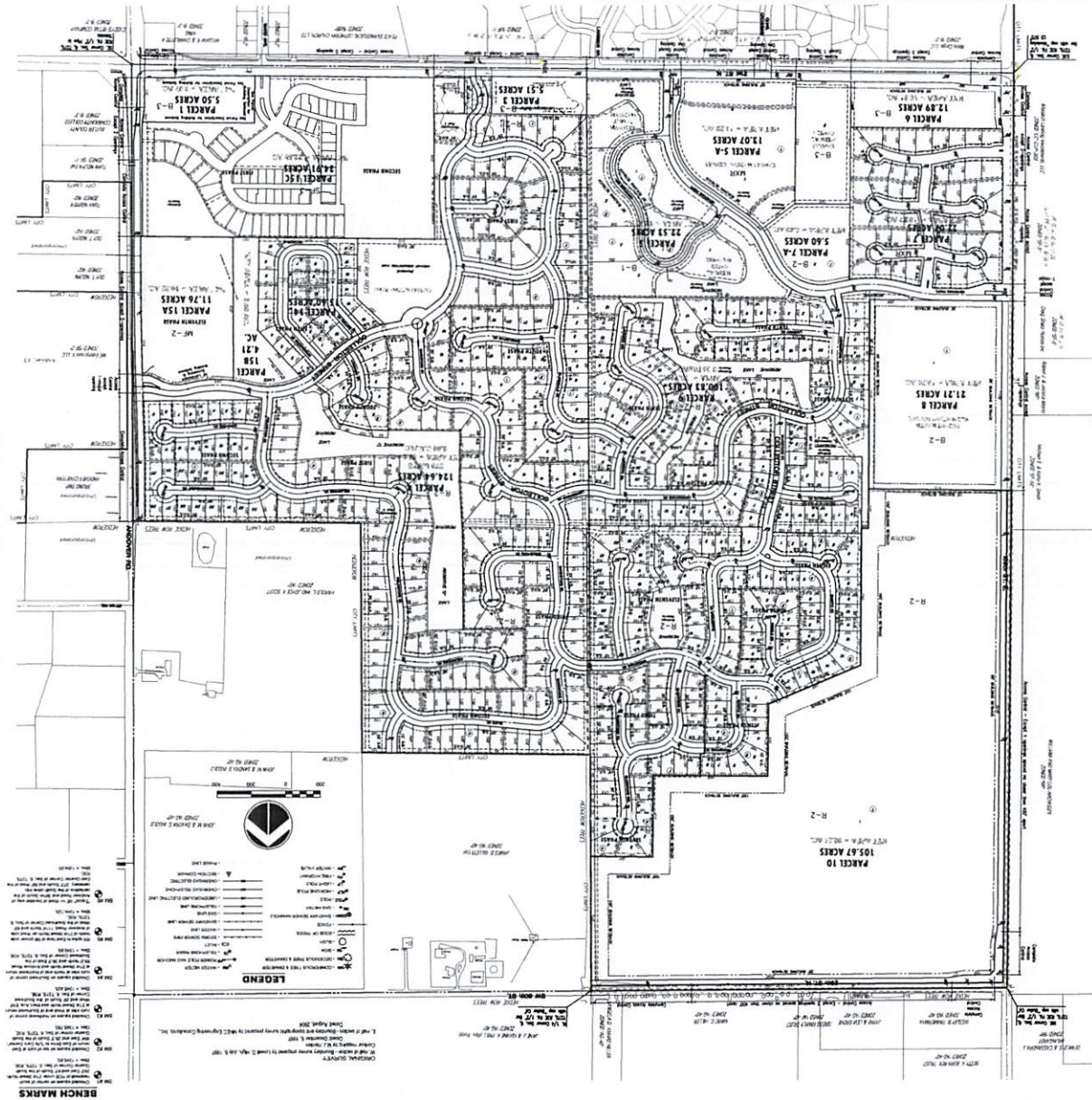
Dana Engstrom, City Clerk

EXHIBIT "A"

AMENDED PLANNED UNIT DEVELOPMENT PLAN

THE CORNERSTONE ADDITION

11th AMENDMENT TO THE PRELIMINARY P.U.D. PLAN



LEGEND

GENERAL PROVISIONS

PARCEL DESCRIPTIONS (cont.)

NEIGHBORHOOD MAP

INDEX MAP

INDEX MAP

INDEX MAP

INDEX MAP

INDEX MAP

INDEX MAP

INDEX MAP

INDEX MAP

INDEX MAP

INDEX MAP

INDEX MAP

INDEX MAP

INDEX MAP

INDEX MAP

INDEX MAP

INDEX MAP

INDEX MAP

INDEX MAP

INDEX MAP

INDEX MAP

INDEX MAP

INDEX MAP

INDEX MAP

INDEX MAP

INDEX MAP

INDEX MAP

INDEX MAP

INDEX MAP

INDEX MAP

INDEX MAP

INDEX MAP

INDEX MAP

INDEX MAP

INDEX MAP

INDEX MAP

INDEX MAP

INDEX MAP

INDEX MAP

INDEX MAP

INDEX MAP

INDEX MAP

INDEX MAP

INDEX MAP

INDEX MAP

INDEX MAP

INDEX MAP

INDEX MAP

INDEX MAP

INDEX MAP

INDEX MAP

INDEX MAP

INDEX MAP

INDEX MAP

INDEX MAP

INDEX MAP

INDEX MAP

INDEX MAP

INDEX MAP

INDEX MAP

INDEX MAP

INDEX MAP

INDEX MAP

INDEX MAP

INDEX MAP

INDEX MAP

INDEX MAP

INDEX MAP

INDEX MAP

INDEX MAP

INDEX MAP

INDEX MAP

INDEX MAP

INDEX MAP

INDEX MAP

INDEX MAP

INDEX MAP

INDEX MAP

INDEX MAP

INDEX MAP

INDEX MAP

INDEX MAP

INDEX MAP

INDEX MAP

INDEX MAP

INDEX MAP

INDEX MAP

INDEX MAP

INDEX MAP

INDEX MAP

INDEX MAP

INDEX MAP

INDEX MAP

INDEX MAP

INDEX MAP

INDEX MAP

INDEX MAP

INDEX MAP

INDEX MAP

INDEX MAP

INDEX MAP

INDEX MAP

INDEX MAP

INDEX MAP

INDEX MAP

INDEX MAP

INDEX MAP

INDEX MAP

INDEX MAP

INDEX MAP

INDEX MAP

INDEX MAP

INDEX MAP

INDEX MAP

INDEX MAP

INDEX MAP

INDEX MAP

INDEX MAP

INDEX MAP

INDEX MAP

INDEX MAP

INDEX MAP

INDEX MAP

INDEX MAP

INDEX MAP

INDEX MAP

INDEX MAP

INDEX MAP

INDEX MAP

INDEX MAP

INDEX MAP

INDEX MAP

INDEX MAP

INDEX MAP

INDEX MAP

INDEX MAP

INDEX MAP

INDEX MAP

INDEX MAP

INDEX MAP

INDEX MAP

INDEX MAP

INDEX MAP

INDEX MAP

INDEX MAP

INDEX MAP

INDEX MAP

INDEX MAP

INDEX MAP

INDEX MAP

INDEX MAP

INDEX MAP

INDEX MAP

INDEX MAP

INDEX MAP

INDEX MAP

INDEX MAP

INDEX MAP

INDEX MAP

INDEX MAP

INDEX MAP

INDEX MAP

INDEX MAP

INDEX MAP

INDEX MAP

INDEX MAP

INDEX MAP

INDEX MAP

INDEX MAP

INDEX MAP

INDEX MAP

INDEX MAP

INDEX MAP

INDEX MAP

INDEX MAP

INDEX MAP

INDEX MAP

INDEX MAP

INDEX MAP

INDEX MAP

INDEX MAP

INDEX MAP

INDEX MAP

INDEX MAP

INDEX MAP

INDEX MAP

INDEX MAP

INDEX MAP

INDEX MAP

INDEX MAP

INDEX MAP

INDEX MAP

INDEX MAP

INDEX MAP

INDEX MAP

INDEX MAP

INDEX MAP

INDEX MAP

INDEX MAP

INDEX MAP

INDEX MAP

INDEX MAP

INDEX MAP

INDEX MAP

INDEX MAP

INDEX MAP

INDEX MAP

INDEX MAP

INDEX MAP

INDEX MAP

INDEX MAP

INDEX MAP

INDEX MAP

INDEX MAP

INDEX MAP

INDEX MAP

INDEX MAP

INDEX MAP

INDEX MAP

INDEX MAP

INDEX MAP

INDEX MAP

INDEX MAP

INDEX MAP

INDEX MAP

INDEX MAP

INDEX MAP

INDEX MAP

INDEX MAP

INDEX MAP

INDEX MAP

INDEX MAP

INDEX MAP

INDEX MAP

INDEX MAP

INDEX MAP

INDEX MAP

INDEX MAP

INDEX MAP

INDEX MAP

INDEX MAP

INDEX MAP

INDEX MAP

INDEX MAP

INDEX MAP

INDEX MAP

INDEX MAP

INDEX MAP

INDEX MAP

INDEX MAP

INDEX MAP

INDEX MAP

INDEX MAP

INDEX MAP

INDEX MAP

INDEX MAP

INDEX MAP

INDEX MAP

INDEX MAP

INDEX MAP

INDEX MAP

INDEX MAP

INDEX MAP

INDEX MAP

INDEX MAP

INDEX MAP

INDEX MAP

INDEX MAP

INDEX MAP

INDEX MAP

INDEX MAP

INDEX MAP

INDEX MAP

INDEX MAP

INDEX MAP

INDEX MAP

INDEX MAP

INDEX MAP

INDEX MAP

INDEX MAP

INDEX MAP

INDEX MAP

INDEX MAP

INDEX MAP

INDEX MAP

INDEX MAP

INDEX MAP

INDEX MAP

INDEX MAP

INDEX MAP

INDEX MAP

INDEX MAP

INDEX MAP

INDEX MAP

INDEX MAP

INDEX MAP

INDEX MAP

INDEX MAP

INDEX MAP

INDEX MAP

INDEX MAP

INDEX MAP

INDEX MAP

INDEX MAP

INDEX MAP

INDEX MAP

INDEX MAP

INDEX MAP

INDEX MAP

INDEX MAP

INDEX MAP

INDEX MAP

INDEX MAP

INDEX MAP

INDEX MAP

INDEX MAP

INDEX MAP

INDEX MAP

INDEX MAP

INDEX MAP

INDEX MAP

INDEX MAP

INDEX MAP

INDEX MAP