

(Complete Ordinance published at [www.andoverks.com](http://www.andoverks.com)  
on August 17, 2024)

**ORDINANCE NO. 1920**

**AN ORDINANCE ANNEXING LAND INTO THE CITY OF ANDOVER,  
KANSAS.**

WHEREAS, the land described below adjoins the existing boundaries of the City of Andover, Kansas (the "City") and a written petition for annexation of said land has been signed by each and all owners thereof, and have been filed with the City pursuant to K.S.A. 12-520(a)(7), as amended, and therefore, pursuant to K.S.A. 12-520a(f), no resolution, notice or public hearing are required; and

WHEREAS, the Governing Body of the City finds it advisable to annex such land.

**NOW, THEREFORE, BE IT ORDAINED BY THE GOVERNING BODY OF THE  
CITY OF ANDOVER, BUTLER COUNTY, STATE OF KANSAS:**

Section 1. That the following described land is hereby annexed and made a part of the City:

The East 330 feet of the South 660 feet of the Southeast Quarter of Section 21, Township 27 South, Range 3 East of the 6<sup>th</sup> Principal Meridian in Butler County, Kansas, except for road Right-of-Way.

Section 2. The City Clerk is hereby authorized to provide any and all notices necessary to comply with K.S.A. 66-1,176 with respect to this annexation.

Section 3. Pursuant to K.S.A. 12-522, upon passage and publication of this annexation ordinance (the "Ordinance"), the City Clerk shall file a certified copy of such Ordinance with the County Clerk, the Register of Deeds, and the County Election Commissioner, if any, of Butler County.

Section 4. This Ordinance shall take effect and be in full force from and after its adoption by the Governing Body of the City, approval by the Mayor and publication once in the official newspaper of the City.

*[Remainder of Page Intentionally Left Blank]*

PASSED, ADOPTED AND APPROVED by the Governing Body of the City of Andover,  
Kansas this 13th day of August, 2024.

CITY OF ANDOVER, KANSAS

[seal]



By

  
Ronnie Price, Mayor

ATTEST:

By

  
Dana Engstrom, City Clerk

## EXCERPT OF MINUTES

The governing body of the City of Andover, Kansas met in regular session, at the usual meeting place in the City on August 13, 2024, at 7:00 p.m., with Mayor Ronnie Price presiding, and the following members of the governing body present: Tim Berry, Philip Hamilton, Like Warrington, Jodi Ocadiz, Paul Wemmer, and Michael Henry

and the following members absent: None

Thereupon, there was presented to the governing body an Ordinance entitled:

AN ORDINANCE ANNEXING LAND INTO THE CITY OF ANDOVER,  
KANSAS.

Thereupon, the Ordinance was considered and discussed; and on motion of Council President Henry, seconded by Council Member Warrington, the Ordinance was adopted by a majority vote of the members of the Governing Body.

Thereupon, the Ordinance having been adopted by a majority vote of the members of the Governing Body, it was given No. 1920, and was directed to be signed by the Mayor and attested by the City Clerk; and the City Clerk was directed to publish the Ordinance one time in the official city newspaper and to file a certified copy of the same with the County Clerk, the Register of Deeds, and the County Election Commissioner, if any, of Butler County as required by law and as provided therein.

\*\*\*\*

CITY CLERK'S  
CERTIFICATION OF EXCERPT OF MINUTES

I hereby certify that the foregoing is a true and correct Excerpt of Minutes of an August 13, 2024 meeting of the Governing Body of the City of Andover, Kansas.

[seal]



A handwritten signature in blue ink, appearing to read "Dana Engstrom", written over a horizontal line.

Dana Engstrom, City Clerk

PETITION FOR ANNEXATION

The undersigned owners of the following described property to wit:

The East 330 feet of the South 660 feet of the Southeast Quarter of Section 21, Township 27-South, Range 3 East of the 6<sup>th</sup> Principal Meridian in Butler County, Kansas, except for Road Right-of-Way.

Request that the City of Andover to annex to the corporate limits of said City the above-described real property, pursuant to K.S.A. 12-520 (7), and under the general authority of K.S.A. 12-520.

This petition signed the 10<sup>th</sup> day of MAY, 2024.

By: , Agent  
Train Enterprises, LLC  
Brad Train

STATE OF KANSAS     )  
                                      ) SS:  
COUNTY OF BUTLER    )

Personally, appeared before me, a Notary Public in and for the County and State aforesaid Brad Train as Agent for Train Enterprises, LLC, a Kansas limited liability company to me personally known to be said person duly acknowledged the execution of the same.

In testimony whereof, I have hereunto set my hand and official seal on this 10<sup>th</sup> day of MAY, 2024.

 Notary Public

My Commission Expires: 06/27/2026

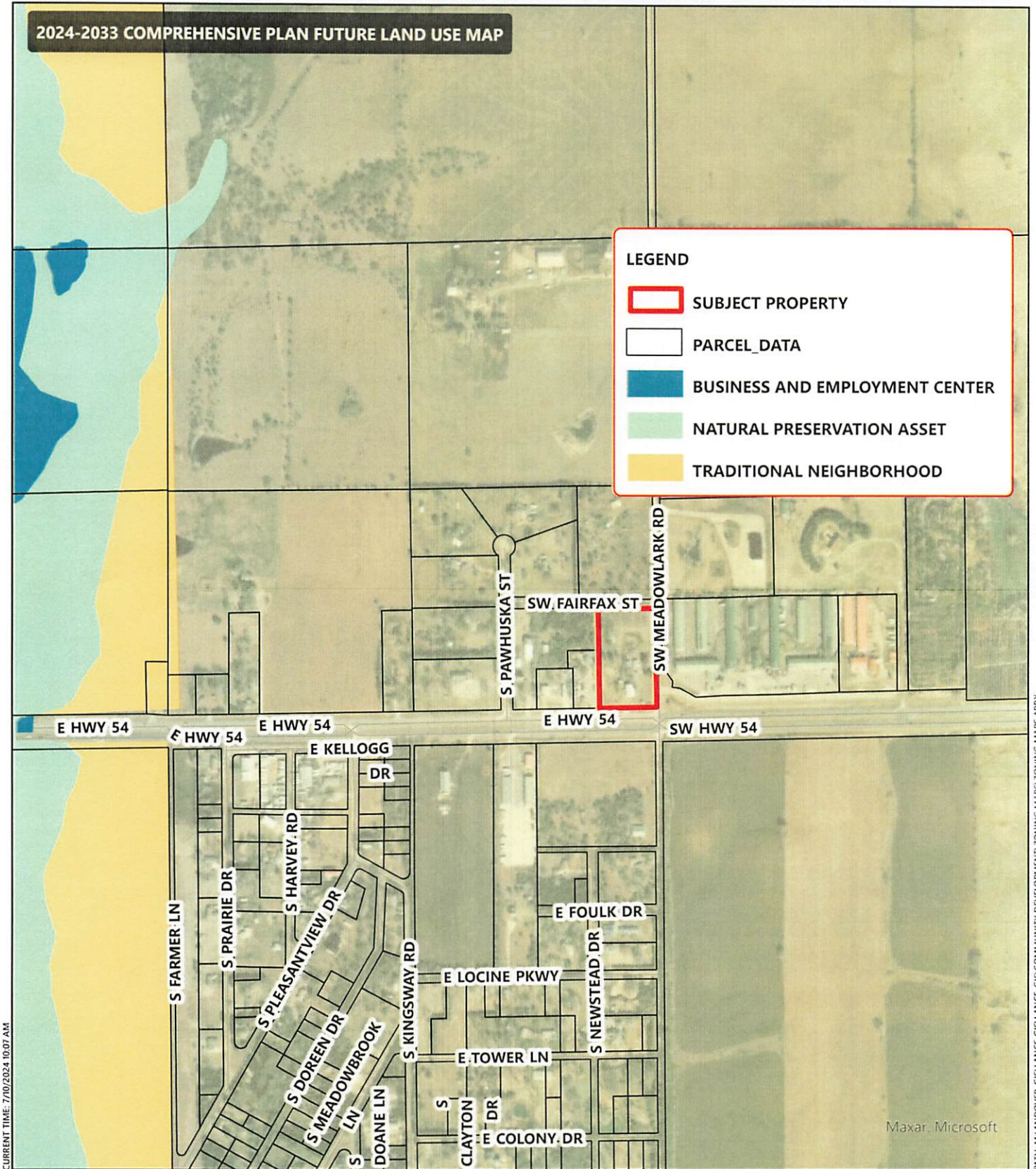




# 2024-2033 COMPREHENSIVE PLAN FUTURE LAND USE MAP

## LEGEND

- SUBJECT PROPERTY
- PARCEL\_DATA
- BUSINESS AND EMPLOYMENT CENTER
- NATURAL PRESERVATION ASSET
- TRADITIONAL NEIGHBORHOOD



CURRENT TIME: 7/10/2024 10:07 AM

PATH: M:\ANDOVER GIS\LANDUSE\GIS\COMMUNITY DEVELOPMENT\ZONING MAPS\ZONING MAPS.APRX  
USER: CB0YD

Maxar, Microsoft



## ANNEXATION PETITION // 9947 S.W. MEADOWLARK ROAD

IT IS UNDERSTOOD THAT WHILE THE CITY OF ANDOVER GIS/MAPPING DEPARTMENT HAS NO INDICATION AND/OR REASON TO BELIEVE THAT THERE ARE INACCURACIES IN INFORMATION INCORPORATED IN THE MAP, THE CITY OF ANDOVER MAKES NO WARRANTY OR REPRESENTATION, EITHER EXPRESSED OR IMPLIED, WITH RESPECT TO THE INFORMATION, OR DATA DISPLAYED.