

(Ordinance published at [www.andoverks.com](http://www.andoverks.com) on November 16, 2024)

## **ORDINANCE NO. 1938**

### **AN ORDINANCE APPROVING THE RECOMMENDATION OF THE ANDOVER CITY PLANNING COMMISSION CHANGING THE ZONING DISTRICT CLASSIFICATION OF CERTAIN LANDS LOCATED IN THE CITY OF ANDOVER, KANSAS, UNDER THE AUTHORITY GRANTED BY THE ZONING REGULATIONS OF THE CITY.**

WHEREAS, the Governing Body of the City of Andover, Kansas (the "City") has received a recommendation from the Andover City Planning Commission on Case No. Z-PUD24-0005; and

WHEREAS, the Governing Body finds proper notice was given and a public hearing was held on Case No. Z-PUD24-0005 on October 15, 2024, all as provided by law and under authority and subject to the provisions of the Zoning Regulations of the City.

**NOW, THEREFORE, BE IT ORDAINED BY THE GOVERNING BODY OF THE CITY OF ANDOVER, KANSAS:**

Section 1. The recommendation of the Planning Commission is hereby approved and the Zoning Regulations of the City of Andover, Kansas are hereby amended to establish a Change in Zoning District Classification to the MF-2 Attached Single Family Residential District, under the The Penner Addition Planned Unit Development District overlay. The Penner Addition Planned Unit Development Plan is also created as depicted in Exhibit A incorporated herein.

#### Legal Description

The Northwest Quarter of Section 5, Township 27 South, Range 3 East of the 6th P.M., EXCEPT, Lot 9, Block B, Brookview Estates, an addition to Butler County, Kansas, AND EXCEPT, the Third Addition to Andover Cemetery, Bruno Township, in the Northwest Quarter, Section 5, Township 27 South, Range 3 East of the 6th Principal Meridian, Butler County, Kansas, AND EXCEPT, Andover Cemetery Fourth Addition, part of the Northwest Quarter of Section 5, Township 27 South, Range 3 East of the 6th P.M., Butler County, Kansas.

#### General Location

S.W. Brookview Road, Andover, Butler County, Kansas

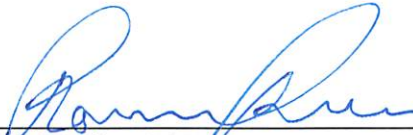
Section 2. Upon the taking effect of this Ordinance, the above zoning change shall be entered and shown on the Official Zoning Map(s) as previously adopted by reference and said map is hereby reincorporated as a part of the Zoning Regulations as amended.

Section 3. This Ordinance shall take effect and be in full force from and after its adoption by the Governing Body of the City, approval by the Mayor and publication once in the official newspaper of the City.

*[Remainder of Page Intentionally Left Blank]*

PASSED, ADOPTED AND APPROVED by the Governing Body of the City of Andover, Kansas this 12th day of November, 2024.

CITY OF ANDOVER, KANSAS



---

Ronnie Price, Mayor

ATTEST:



---

Dana Engstrom, City Clerk

**Exhibit A**



# 2024-2033 COMPREHENSIVE PLAN FUTURE LAND USE MAP

## LEGEND

- SUBJECT PROPERTY
- PARCEL\_DATA
- BUSINESS AND EMPLOYMENT CENTER
- CITY CENTER
- CITY CORRIDOR
- EDUCATION CENTER
- INDUSTRIAL CENTER
- MIXED RESIDENTIAL NEIGHBORHOOD
- NEIGHBORHOOD CENTER
- NEIGHBORHOOD CORRIDOR
- NATURAL PRESERVATION ASSET
- PARKS AND RECREATION ASSET
- TRADITIONAL NEIGHBORHOOD
- TRAIL ORIENTED CORRIDOR

CURRENT TIME: 9/6/2024 11:25 AM

PATH: M:\ANDOVER\_GIS\LANDUSE\GIS\COMMUNITY DEVELOPMENT\ZONING MAPS\ZONING MAPS.APRX  
USER: CB0YD



0 1,000 2,000 3,000 4,000 FEET

## Z-PUD24-0005 // PENNER ADDITION PRELIMINARY PUD

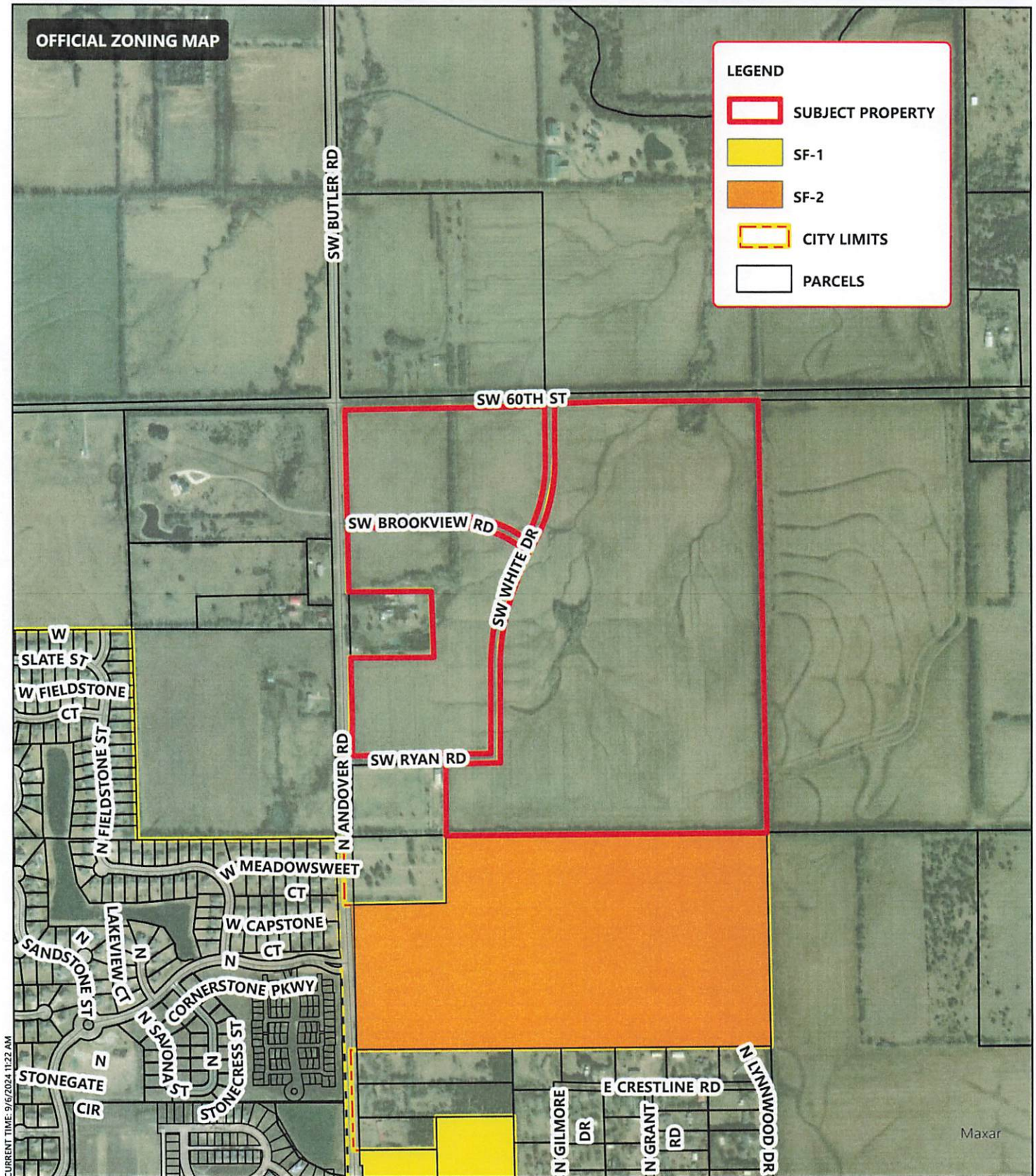
IT IS UNDERSTOOD THAT WHILE THE CITY OF ANDOVER GIS/MAPPING DEPARTMENT HAS NO INDICATION AND/OR REASON TO BELIEVE THAT THERE ARE INACCURACIES IN INFORMATION INCORPORATED IN THE MAP, THE CITY OF ANDOVER MAKES NO WARRANTY OR REPRESENTATION, EITHER EXPRESSED OR IMPLIED, WITH RESPECT TO THE INFORMATION, OR DATA DISPLAYED.



# OFFICIAL ZONING MAP

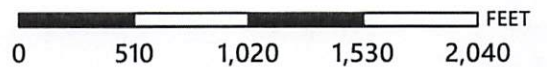
## LEGEND

- SUBJECT PROPERTY
- SF-1
- SF-2
- CITY LIMITS
- PARCELS



CURRENT TIME: 9/16/2024 11:22 AM

PATH: M:\ANDOVER\_GIS\GISANCE\_GIS\COMMUNITY DEVELOPMENT\ZONING MAPS\ZONING MAPS.APRX  
USER: CB010



## Z-PUD24-0005 // PENNER ADDITION PRELIMINARY PUD

IT IS UNDERSTOOD THAT WHILE THE CITY OF ANDOVER GIS/MAPPING DEPARTMENT HAS NO INDICATION AND/OR REASON TO BELIEVE THAT THERE ARE INACCURACIES IN INFORMATION INCORPORATED IN THE MAP, THE CITY OF ANDOVER MAKES NO WARRANTY OR REPRESENTATION, EITHER EXPRESSED OR IMPLIED, WITH RESPECT TO THE INFORMATION, OR DATA DISPLAYED.