

(Ordinance published at www.andoverks.gov on May 3, 2025)

ORDINANCE NO. 1954

**AN ORDINANCE ANNEXING LAND INTO THE CITY OF ANDOVER,
KANSAS.**

WHEREAS, the land described below adjoins the existing boundaries of the City of Andover, Kansas (the "City") and a written petition for annexation of said land has been signed by each and all owners thereof, and have been filed with the City pursuant to K.S.A. 12-520(a)(7), as amended, and therefore, pursuant to K.S.A. 12-520a(f), no resolution, notice or public hearing are required; and

WHEREAS, the Governing Body of the City finds it advisable to annex such land.

**NOW, THEREFORE, BE IT ORDAINED BY THE GOVERNING BODY OF THE
CITY OF ANDOVER, BUTLER COUNTY, STATE OF KANSAS:**

Section 1. That the following described land is hereby annexed and made a part of the City:

Lots 17 and 39, Revised Plat of Stoner's Tracts, in the NW ¼ of Section 8, Township 28 South, Range 03 East of the 6th PM, a subdivision of Butler County, Kansas..

Section 2. The City Clerk is hereby authorized to provide any and all notices necessary to comply with K.S.A. 66-1,176 with respect to this annexation.

Section 3. Pursuant to K.S.A. 12-522, upon passage and publication of this annexation ordinance (the "Ordinance"), the City Clerk shall file a certified copy of such Ordinance with the County Clerk, the Register of Deeds, and the County Election Commissioner, if any, of Butler County.

Section 4. This Ordinance shall take effect and be in full force from and after its adoption by the Governing Body of the City, approval by the Mayor and publication once in the official newspaper of the City.

[Remainder of Page Intentionally Left Blank]


PASSED, ADOPTED AND APPROVED by the Governing Body of the City of Andover,
Kansas this 29th day of April, 2025.

CITY OF ANDOVER, KANSAS

[seal]



ATTEST:

By 
Ronnie Price, Mayor

By 
Dana Engstrom, City Clerk

EXCERPT OF MINUTES

The governing body of the City of Andover, Kansas met in regular session, at the usual meeting place in the City on April 29, 2025, at 7:00 p.m., with Mayor Ronnie Price presiding, and the following members of the governing body present: Philip Hamilton, Mike Warrington, Michael Henry, Jodi Ocadiz, and Paul Wemmer.

and the following members absent: Tim Berry

Thereupon, there was presented to the governing body an Ordinance entitled:

AN ORDINANCE ANNEXING LAND INTO THE CITY OF ANDOVER,
KANSAS.

Thereupon, the Ordinance was considered and discussed; and on motion of Council President Henry, seconded by Council Member Hamilton, the Ordinance was adopted by a majority vote of the members of the Governing Body.

Thereupon, the Ordinance having been adopted by a majority vote of the members of the Governing Body, it was given No. 1954, and was directed to be signed by the Mayor and attested by the City Clerk; and the City Clerk was directed to publish the Ordinance one time in the official city newspaper and to file a certified copy of the same with the County Clerk, the Register of Deeds, and the County Election Commissioner, if any, of Butler County as required by law and as provided therein.

CITY CLERK'S
CERTIFICATION OF EXCERPT OF MINUTES

I hereby certify that the foregoing is a true and correct Excerpt of Minutes of an April 29,
2025 meeting of the Governing Body of the City of Andover, Kansas.

[seal]



A handwritten signature in blue ink, appearing to read "Dana Engstrom".

Dana Engstrom, City Clerk

PETITION FOR ANNEXATION


The undersigned owners of the following described property to wit:

Lots 17 and 39, Revised Plat of Stoner's Tracts, In the NW1/4 of Section 8 – T28S – R3E, a Subdivision of Butler County, Kansas.

Request that the City of Andover to annex to the corporate limits of said City the above-described real property, pursuant to K.S.A. 12-520 (7), and under the general authority of K.S.A. 12-520.

This petition signed the 20th day of March, 2025.

RPR Group Investments, LLC
A Kansas limited liability company

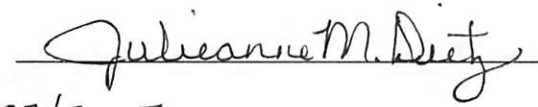


Russell P. Relph Managing Member

STATE OF KANSAS)
) SS:
COUNTY OF SEDGWICK)

Personally, appeared before me, a Notary Public in and for the County and State aforesaid Russell P. Relph, Managing Member, on behalf of RPR Group Investments, LLC, a Kansas limited liability company to me personally known to be said person duly acknowledged the execution of the same

In Testimony whereof, I have hereunto set my and official seal on the 20th day of March, 2025.



Notary Public
My Commission Expires 4/27/2027



AERIAL MAP

LEGEND

- SUBJECT PROPERTY**
- CITY LIMITS**
- PARCELS**

SW 130TH ST

SW BUTLER RD

E FLINT HILLS N

E PRAIRIE POINT CT

Maxar

 SUBJECT PROPERTY

 CITY LIMITS

 PARCELS

SW BUTLER RD

CURRENT TIME: 4/17/2025 1:58 PM

PATH: M:\ANDOVER_GIS\LANCE_GIS\COMMUNITY DEVELOPMENT\ZONING MAPS\ZONING MAPS.APRX
USER: JBOYD







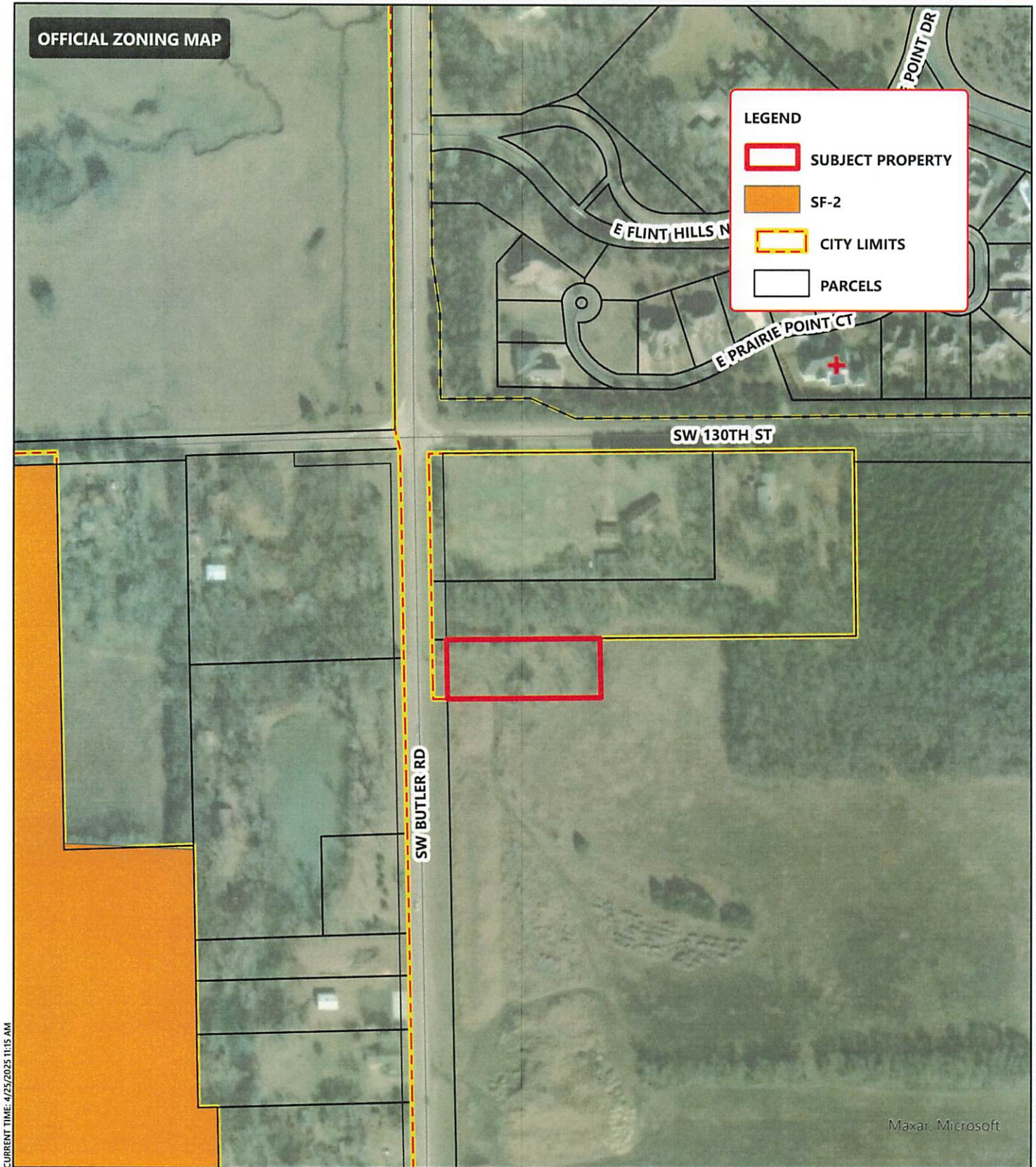
ANNEXATION AREA // 13086 S.W. BUTLER RD.

IT IS UNDERSTOOD THAT WHILE THE CITY OF ANDOVER GIS/MAPPING DEPARTMENT HAS NO INDICATION AND/OR REASON TO BELIEVE THAT THERE ARE INACCURACIES IN INFORMATION INCORPORATED IN THE MAP, THE CITY OF ANDOVER MAKES NO WARRANTY OR REPRESENTATION, EITHER EXPRESSED OR IMPLIED, WITH RESPECT TO THE INFORMATION, OR DATA DISPLAYED.

OFFICIAL ZONING MAP

LEGEND

-  SUBJECT PROPERTY
-  SF-2
-  CITY LIMITS
-  PARCELS



CURRENT TIME: 4/25/2025 11:15 AM

PATH: M:\ANDOVER_GIS\ANCE_GIS\COMMUNITY DEVELOPMENT\ZONING MAPS\ZONING MAPS.APRX
USER: JBOYD

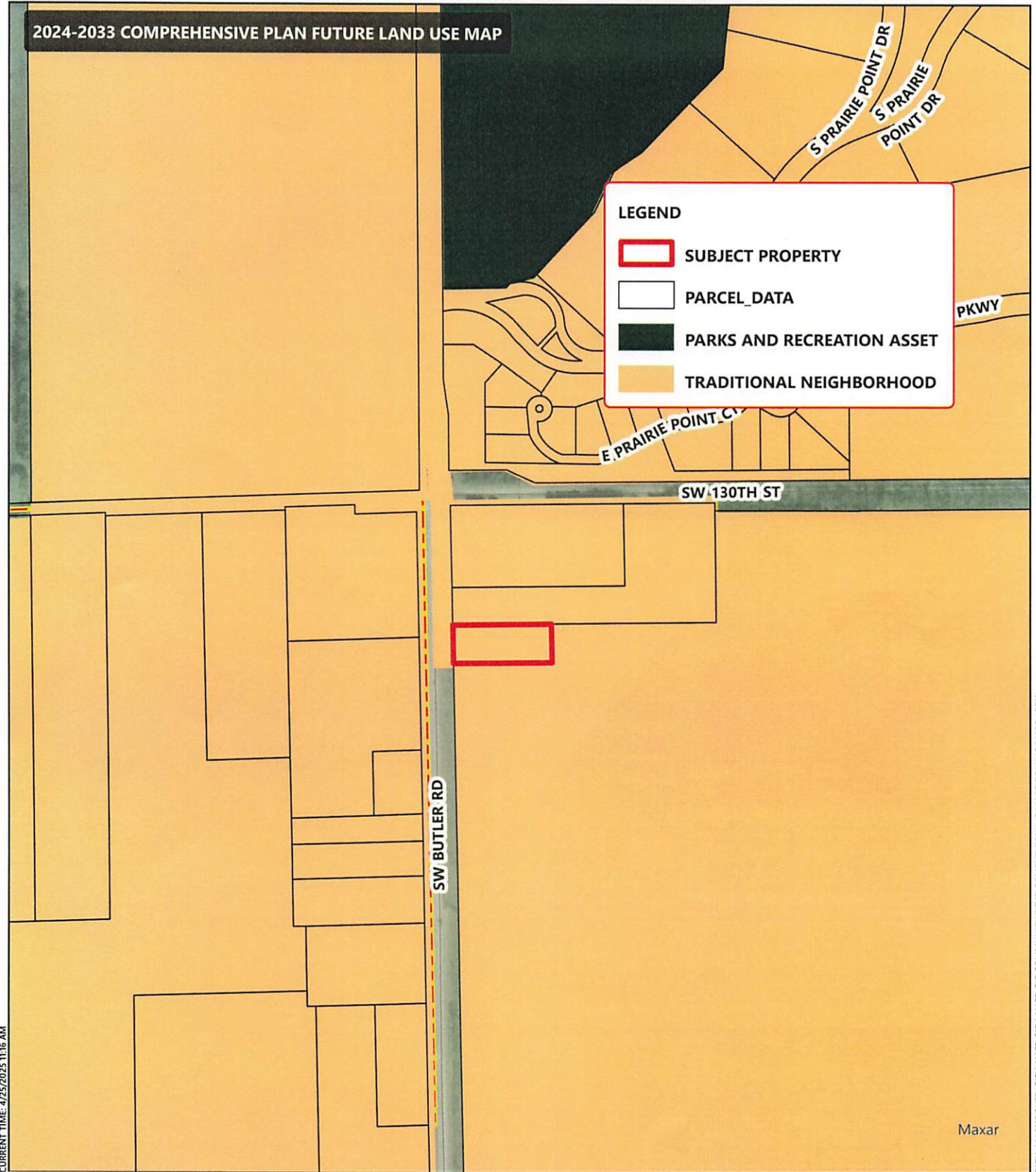
Maxar, Microsoft



ANNEXATION AREA // 13086 S.W. BUTLER RD.

IT IS UNDERSTOOD THAT WHILE THE CITY OF ANDOVER GIS/MAPPING DEPARTMENT HAS NO INDICATION AND/OR REASON TO BELIEVE THAT THERE ARE INACCURACIES IN INFORMATION INCORPORATED IN THE MAP, THE CITY OF ANDOVER MAKES NO WARRANTY OR REPRESENTATION, EITHER EXPRESSED OR IMPLIED, WITH RESPECT TO THE INFORMATION, OR DATA DISPLAYED.

2024-2033 COMPREHENSIVE PLAN FUTURE LAND USE MAP



ANNEXATION AREA // 13086 S.W. BUTLER RD.

IT IS UNDERSTOOD THAT WHILE THE CITY OF ANDOVER GIS/MAPPING DEPARTMENT HAS NO INDICATION AND/OR REASON TO BELIEVE THAT THERE ARE INACCURACIES IN INFORMATION INCORPORATED IN THE MAP, THE CITY OF ANDOVER MAKES NO WARRANTY OR REPRESENTATION, EITHER EXPRESSED OR IMPLIED, WITH RESPECT TO THE INFORMATION, OR DATA DISPLAYED.