

(Ordinance published at www.andoverks.gov on October 4, 2025)

ORDINANCE NO. 1975

**AN ORDINANCE ANNEXING LAND INTO THE CITY OF ANDOVER,
KANSAS PURSUANT TO K.S.A. 12-520c.**

WHEREAS, Governing Body of the City of Andover, Kansas (“City”), previously received a petition for annexation from property owners seeking to annex certain land not adjacent to the city limits; and

WHEREAS, said petition did not properly cite or comply with the requirements of K.S.A. 12-520c, which governs the annexation of land not adjoining the city, known as an island annexation; and

WHEREAS, the property owners have since corrected the error by submitting a revised and proper petition for an island annexation pursuant to K.S.A. 12-520c; and

WHEREAS, upon receipt of the corrected petition, City passed Resolution 25-20 declaring its intent to annex the land described therein, in compliance with the statutory procedures; and

WHEREAS, the Board of County Commissioners of Butler Kansas, has given its consent to the island annexation by adopting Resolution No. 25-36, dated September 9, 2025 as required by K.S.A. 12-520c, attached hereto as Exhibit A; and

WHEREAS, the City finds it necessary and desirable to annex the property described in the proper petition in order to promote the orderly growth and development of the city;

**NOW, THEREFORE, BE IT ORDAINED BY THE GOVERNING BODY OF THE
CITY OF ANDOVER, BUTLER COUNTY, STATE OF KANSAS:**

Section 1. That there is hereby annexed to the City of Andover Kansas, the following described real property in Butler County, Kansas to wit:

**The East 330 feet of the South 660 feet of the Southeast Quarter of Section 21,
Township 27 South, Range 3 East of the 6th Principal Meridian in Butler
County, Kansas, except for Road Right of Way.**

Section 2. That the above tract of land is annexed to the corporate limits of the City of Andover, Kansas pursuant to K.S.A. 12-520c.

Section 3. Pursuant to K.S.A. 12-522, upon passage and publication of this annexation ordinance (the “Ordinance”), the City Clerk shall file a certified copy of such Ordinance with the County Clerk, the Register of Deeds, and the County Election Commissioner, if any, of Butler County.

Section 4. This Ordinance annexing land into the City supersedes and repeals Ordinance No. 1920.

Section 5. This Ordinance shall take effect and be in full force from and after its adoption by the Governing Body of the City, approval by the Mayor and publication once in the official newspaper of the City.


[Remainder of Page Intentionally Left Blank]

PASSED, ADOPTED AND APPROVED by the Governing Body of the City of Andover,
Kansas this 30th day of September, 2025.

CITY OF ANDOVER, KANSAS

[seal]



By 
Ronnie Price, Mayor

ATTEST:

By 
Dana Engstrom, City Clerk

EXCERPT OF MINUTES

The Governing Body of the City of Andover, Kansas met in regular session, at the usual meeting place in the City on September 30, 2025, at 7:00 p.m., with Mayor Ronnie Price presiding, and the following members of the governing body present: Tim Berry, Philip Hamilton, Michael Henry, Jodi Ocadiz, Mike Warrington, and Paul Wemmer.

and the following members absent: None

Thereupon, there was presented to the governing body an Ordinance entitled:

AN ORDINANCE OF THE CITY OF ANDOVER, KANSAS PURSUANT TO K.S.A. 12-520c ANNEXING TO THE CORPORATE LIMITS CERTAIN TRACTS OF LAND WHICH LANDS ARE ANNEXED AT THE REQUEST OF THE OWNERS THEREOF.

Thereupon, the Ordinance was considered and discussed; and on motion of Council President Henry, seconded by Council Member Hamilton, the Ordinance was adopted by a majority vote of the members of the Governing Body.

Thereupon, the Ordinance having been adopted by a majority vote of the members of the Governing Body, it was given No. 1975, and was directed to be signed by the Mayor and attested by the City Clerk; and the City Clerk was directed to publish the Ordinance one time in the official city newspaper and to file a certified copy of the same with the County Clerk, the Register of Deeds, and the County Election Commissioner, if any, of Butler County as required by law and as provided therein.

CITY CLERK'S
CERTIFICATION OF EXCERPT OF MINUTES

I hereby certify that the foregoing is a true and correct Excerpt of Minutes of a September 30, 2025 meeting of the Governing Body of the City of Andover, Kansas.

[seal]





Dana Engstrom, City Clerk

EXHIBIT A:
Butler County Consent Resolution

BUTLER COUNTY RESOLUTION NO. 25-36

A RESOLUTION ISSUED PURSUANT TO K.S.A. 12-520C IN CONNECTION WITH A REQUEST FROM THE CITY OF ANDOVER, KANSAS, FOR AN ISLAND ANNEXATION.

WHEREAS, the City of Andover, Kansas (the "City") has submitted a request for the consent of Butler County, Kansas ("County") to annex certain land described below that is wholly located within Butler County, Kansas, but which does not adjoin the existing boundaries of the City (the "Annexation"); and

WHEREAS, the Annexation is sought pursuant to K.S.A. 12-520c, which permits a city to annex land not adjoining its boundary if such land is located in the same county and the board of county commissioners determines that the annexation will not hinder or prevent the proper growth and development of the area or that of any other incorporated city located within the county; and

WHEREAS, the Board of County Commissioners of Butler County, Kansas (the "Board") has received and reviewed the City's request and all supporting documentation, including the Property owners' annexation petition with a map of the area proposed to be annexed and a resolution of intent from the City, attached hereto as Exhibit A as "Supporting Documentation"; and

WHEREAS, the Board has considered the City's request and hereby finds that the Annexation will not hinder or prevent the proper growth and development of the area proposed to be annexed or that of any other incorporated city located within Butler County.

NOW THEREFORE, BE IT RESOLVED BY THE BOARD OF COUNTY COMMISSIONERS OF BUTLER COUNTY, KANSAS, AS FOLLOWS:

SECTION 1: Butler County hereby finds and determines the annexation by the City of Andover, Kansas, of the following described real estate:

The East 330 feet of the South 660 feet of the Southeast Quarter of Section 21, Township 27-South, Range 3 East of the 6th Principal Meridian in Butler County, Kansas, except for Road Right of Way,

(the "Property") will not hinder or prevent the proper growth and development of the area being annexed or that of any other incorporated city located within Butler County, Kansas, and thus consents to the annexation of the Property.

SECTION 2: This Resolution shall be filed of record with the Butler County Clerk and transmitted to the city of Andover, Kansas, to evidence the Board of County Commissioners of Butler County, Kansas's consent to the annexation of the Property.

SECTION 3: This Resolution shall take effect immediately upon its adoption.

PASSED, ADOPTED, AND APPROVED by the Board of County Commissioners of
Butler County, Kansas this 9th day of September, 2025.

THE BOARD OF COUNTY COMMISSIONER
OF BUTLER COUNTY, KANSAS ("County")



Darren S. Jackson, Chairman

Attest:



Tatum Stafford, Butler County Clerk



Approved as to form:



Terrence L. Huelskamp, Butler County Counselor

EXHIBIT A:
Supporting Documentation



Board of County Commissioners
Butler County Courthouse
205 W. Central Avenue
El Dorado, KS 67042

Re: Request for Findings and Determination under K.S.A. 12-520c(a)(3)

Dear Commissioners:

Enclosed please find a certified copy of Resolution No. 25-20, adopted by the governing body of the City of Andover, Kansas, on July 29, 2025. **This certified copy of the resolution is being sent as the official filing with the Board of County Commissioners pursuant to K.S.A. 12-520c(c).** This resolution formally requests that the Board of County Commissioners make the findings and determination required under K.S.A. 12-520c(a)(3) regarding the proposed annexation of certain land within Butler County by the City of Andover.

To assist in your review and for your convenience, we have also prepared the enclosed draft resolution for your consideration and possible adoption by the Board of County Commissioners.

Please let us know if there are any questions or additional information you need to complete this review. We appreciate your prompt attention to this request in accordance with K.S.A. 12-520c(c).

Sincerely,

A handwritten signature in blue ink, appearing to read "Dana Engstrom".

Dana Engstrom
City Clerk
City of Andover, Kansas

Enclosures:
Certified Copy of City Resolution No. 25-20
Draft County Resolution

RESOLUTION 25-20

A RESOLUTION OF THE GOVERNING BODY OF THE CITY OF ANDOVER, KANSAS, REQUESTING THAT THE BUTLER COUNTY, KANSAS BOARD OF COUNTY COMMISSIONERS MAKE A FINDING AS REQUIRED UNDER K.S.A. 12-520c(a)(3), REGARDING THE PROPOSED ANNEXATION OF CERTAIN LAND LOCATED WITHIN BUTLER COUNTY, KANSAS.

WHEREAS, the governing body of the City of Andover, Kansas, deems it advisable to annex certain land located within Butler County, Kansas, which is not adjoining the current boundaries of the City; and

WHEREAS, K.S.A. 12-520c(a)(3) requires that the Butler County, Kansas Board of County Commissioners, by a two-thirds (2/3) vote of its members, find and determine that such annexation will not hinder or prevent the proper growth and development of the area or that of any other incorporated city within the county;

THEREFORE, BE IT RESOLVED BY THE GOVERNING BODY OF THE CITY OF ANDOVER, KANSAS:

Section 1. The governing body of the City of Andover, Kansas (the "City") hereby determines that it is necessary and appropriate for the orderly growth of the City of Andover, Kansas to annex the following described land located in Butler County, Kansas as petitioned by the property owner:

The East 330 feet of the South 660 feet of the Southeast Quarter of Section 21, Township 27-South, Range 3 East of the 6th Principal Meridian in Butler County, Kansas, except for Road Right of Way.

Section 2. Prior to the adoption and publication of an ordinance annexing the above-described property, the City requests the Butler County, Kansas Board of Commissioners find and determine that the annexation of such land will not hinder or prevent the proper growth and development of the area or that of any other unincorporated city within Butler County, Kansas as specified under subsection (a) (3) of K.S.A. 12-520c.

Section 3. The City Clerk is hereby directed to file a certified copy of this Resolution with the Butler County, Kansas Board of County Commissioners for their findings and determination.

Section 4. This Resolution shall become effective upon adoption and passage by the governing body of the City.

[Remainder of Page Intentionally Left Blank]

PASSED, ADOPTED, AND APPROVED by the governing body of the City of Andover, Kansas this 29th day of July, 2025.

CITY OF ANDOVER, KANSAS

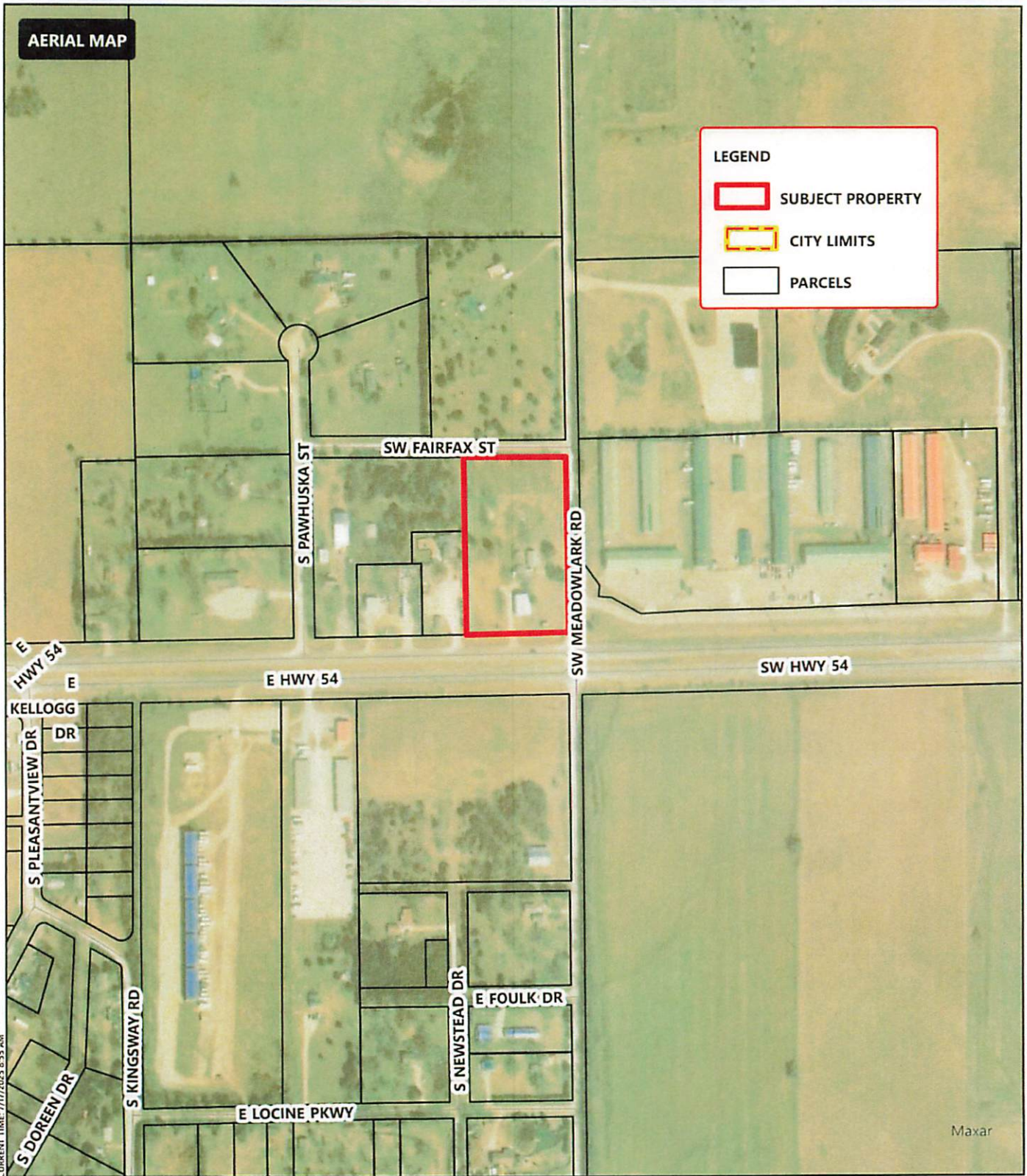
[seal]



ATTEST:

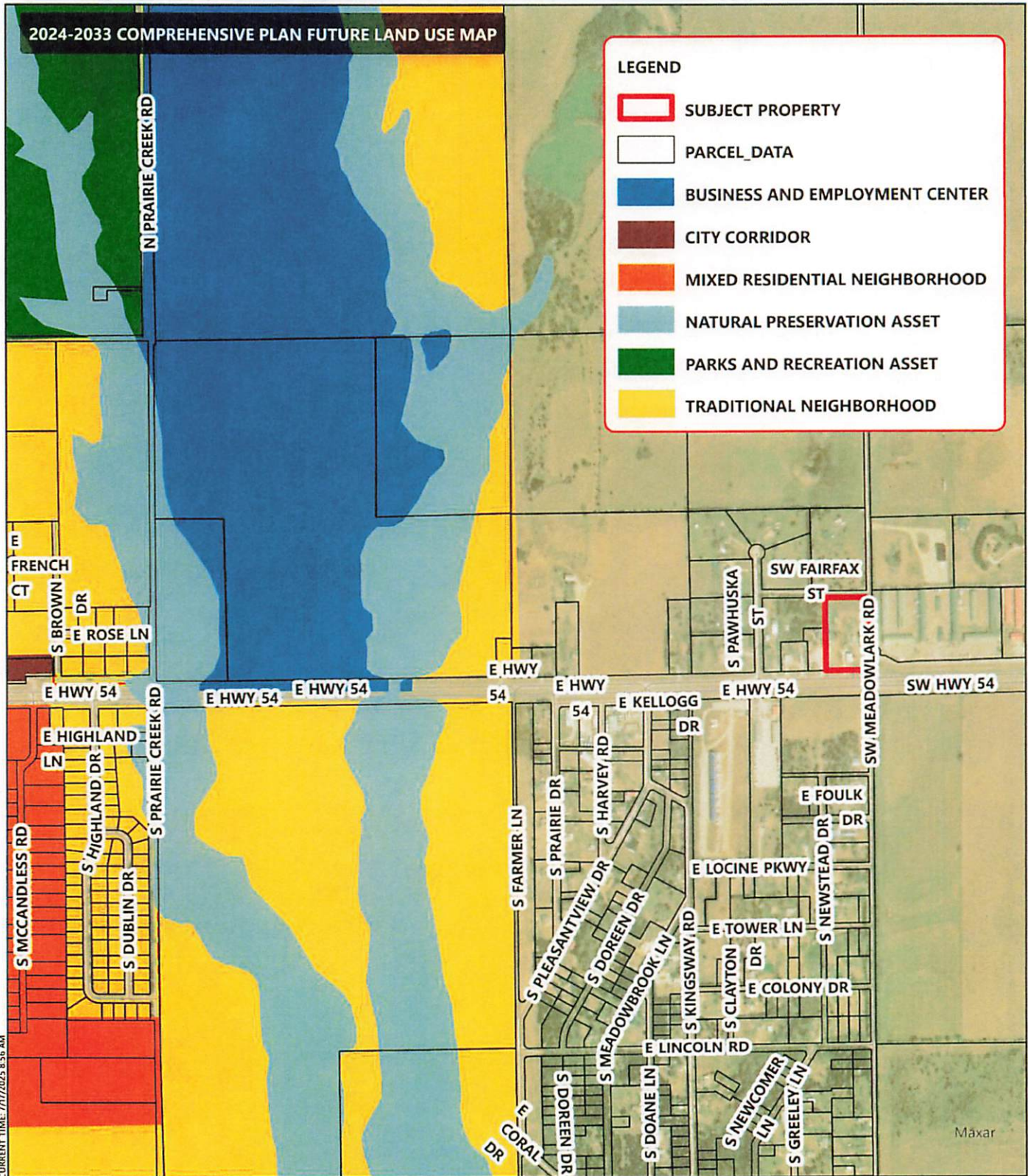
By 
Ronnie Price, Mayor

By 
Dana Engstrom, City Clerk



ANNEXATION PETITION // TRAIN ENTERPRISES ADDITION

IT IS UNDERSTOOD THAT WHILE THE CITY OF ANDOVER GIS/MAPPING DEPARTMENT HAS NO INDICATION AND/OR REASON TO BELIEVE THAT THERE ARE INACCURACIES IN INFORMATION INCORPORATED IN THE MAP, THE CITY OF ANDOVER MAKES NO WARRANTY OR REPRESENTATION, EITHER EXPRESSED OR IMPLIED, WITH RESPECT TO THE INFORMATION, OR DATA DISPLAYED.



ANNEXATION PETITION // TRAIN ENTERPRISES ADDITION

IT IS UNDERSTOOD THAT WHILE THE CITY OF ANDOVER GIS/MAPPING DEPARTMENT HAS NO INDICATION AND/OR REASON TO BELIEVE THAT THERE ARE INACCURACIES IN INFORMATION INCORPORATED IN THE MAP, THE CITY OF ANDOVER MAKES NO WARRANTY OR REPRESENTATION, EITHER EXPRESSED OR IMPLIED, WITH RESPECT TO THE INFORMATION, OR DATA DISPLAYED