

(Ordinance published at www.andoverks.gov on November 15, 2025)

ORDINANCE NO. 1979

**AN ORDINANCE ANNEXING LAND INTO THE CITY OF ANDOVER,
KANSAS.**

WHEREAS, the land described below adjoins the existing boundaries of the City of Andover, Kansas (the "City") and a written petition for annexation of said land has been signed by each and all owners thereof, and have been filed with the City pursuant to K.S.A. 12-520(a)(7), as amended, and therefore, pursuant to K.S.A. 12-520a(f), no resolution, notice or public hearing are required; and

WHEREAS, the Governing Body of the City finds it advisable to annex such land.

**NOW, THEREFORE, BE IT ORDAINED BY THE GOVERNING BODY OF THE
CITY OF ANDOVER, BUTLER COUNTY, STATE OF KANSAS:**

Section 1. That the following described land is hereby annexed and made a part of the
City:

Part of the West half of the Southwest quarter of Section 16, Township 27 South, Range 03 East of the 6th P.M., Butler County, Kansas, more particularly described as: Beginning at the Southwest corner of the West half of said Southwest quarter; thence with a KS S NAD83 bearing of N88°59'25"E along the South line of said West half, a distance of 1050.25 feet; thence N00°55'53"W parallel with the East line of said West half, a distance of 130.00 feet; thence N39°40'12"E, a distance of 315.00 feet; thence N00°55'53"W parallel with the East line of said West half, a distance of 520.00 feet; thence N27°22'28"W, a distance of 643.00 feet; thence S89°06'15"W perpendicular to the West line of said West half, a distance of 668.00 feet; thence N00°53'45"W parallel with said West line, a distance of 140.88 feet; thence S89°06'15"W perpendicular to said West line, a distance of 300.00 feet to said West line of said West half; thence S00°53'45"E along said West line, a distance of 1607.81 feet to the Point of Beginning;

EXCEPT,

Beginning at the Southwest corner of said Southwest quarter; thence N88°59'25"E along the South line of said Southwest quarter a distance of 208.70 feet; thence N00°53'45"W, 253.70 feet, thence S88°59'25"W, 208.70 feet to the West line of said Southwest quarter; thence S00°53'45"E, along said West line a distance of 253.70 feet to the Point of Beginning of excepted tract.

Section 2. The City Clerk is hereby authorized to provide any and all notices necessary to comply with K.S.A. 66-1,176 with respect to this annexation.

Section 3. Pursuant to K.S.A. 12-522, upon passage and publication of this annexation ordinance (the "Ordinance"), the City Clerk shall file a certified copy of such Ordinance with the County Clerk, the Register of Deeds, and the County Election Commissioner, if any, of Butler County.

Section 4. This Ordinance shall take effect and be in full force from and after its adoption by the Governing Body of the City, approval by the Mayor and publication once in the official newspaper of the City.

[Remainder of Page Intentionally Left Blank]

PASSED, ADOPTED AND APPROVED by the Governing Body of the City of Andover,
Kansas this 12th day of Novemeber, 2025.


CITY OF ANDOVER, KANSAS

[seal]



By 
Ronnie Price, Mayor

ATTEST:

By 
Dana Engstrom, City Clerk

EXCERPT OF MINUTES

The governing body of the City of Andover, Kansas met in regular session, at the usual meeting place in the City on November 12, 2025, at 7:00 p.m., with Mayor Ronnie Price presiding, and the following members of the governing body present: Tim Berry, Philip Hamilton, Michael Henry, Jodi Ocadiz, Mike Warrington, and Paul Wemmer.

and the following members absent: None

Thereupon, there was presented to the governing body an Ordinance entitled:

AN ORDINANCE ANNEXING LAND INTO THE CITY OF ANDOVER,
KANSAS.

Thereupon, the Ordinance was considered and discussed; and on motion of Council Member Berry, seconded by Council President Henry, the Ordinance was adopted by a majority vote of the members of the Governing Body.


Thereupon, the Ordinance having been adopted by a majority vote of the members of the Governing Body, it was given No. 1979, and was directed to be signed by the Mayor and attested by the City Clerk; and the City Clerk was directed to publish the Ordinance one time in the official city newspaper and to file a certified copy of the same with the County Clerk, the Register of Deeds, and the County Election Commissioner, if any, of Butler County as required by law and as provided therein.

CITY CLERK'S
CERTIFICATION OF EXCERPT OF MINUTES

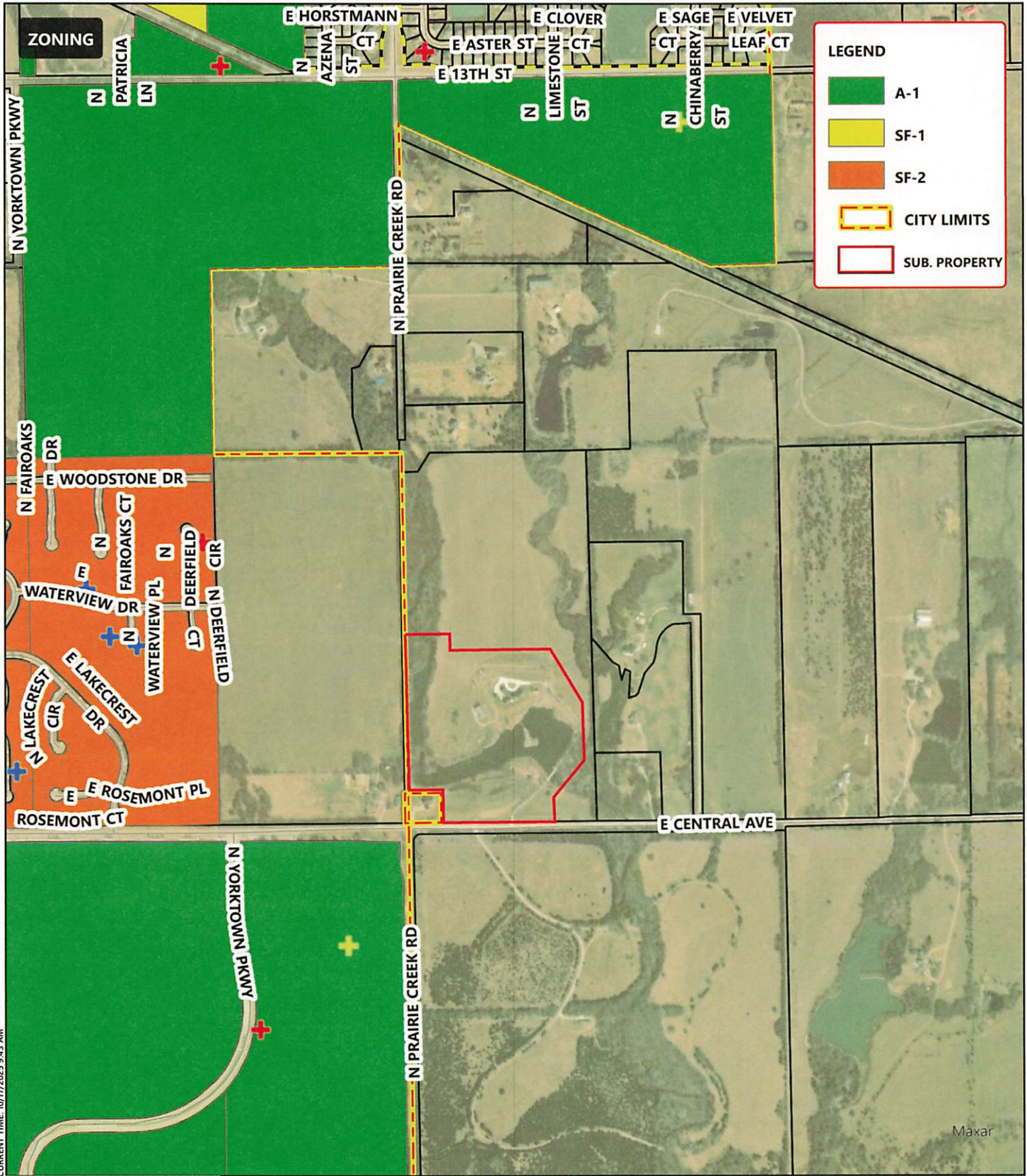
I hereby certify that the foregoing is a true and correct Excerpt of Minutes of a November 12, 2025 meeting of the Governing Body of the City of Andover, Kansas.

[seal]



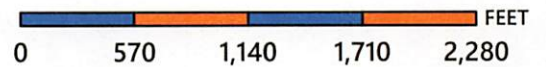


Dana Engstrom, City Clerk



CURRENT TIME: 10/17/2025 9:43 AM

PATH: M:\ANDOVER_GIS\ANCE_GIS\COMMUNITY DEVELOPMENT\ZONING MAPS\ZONING MAPS.APRX
USER: DCARROLL



ANNEXATION PETITION // 1904 E. CENTRAL AVE

IT IS UNDERSTOOD THAT WHILE THE CITY OF ANDOVER GIS/MAPPING DEPARTMENT HAS NO INDICATION AND/OR REASON TO BELIEVE THAT THERE ARE INACCURACIES IN INFORMATION INCORPORATED IN THE MAP, THE CITY OF ANDOVER MAKES NO WARRANTY OR REPRESENTATION, EITHER EXPRESSED OR IMPLIED, WITH RESPECT TO THE INFORMATION, OR DATA DISPLAYED.

PETITION FOR ANNEXATION

The undersigned owners of the following described property to wit:

PART OF THE WEST HALF OF THE SOUTHWEST QUARTER OF SECTION 16, TOWNSHIP 27 SOUTH, RANGE 3 EAST OF THE 6TH P.M., BUTLER COUNTY, KANSAS, MORE PARTICULARLY DESCRIBED AS BEGINNING AT THE SOUTHWEST CORNER OF THE WEST HALF OF SAID SOUTHWEST QUARTER; THENCE WITH A KS S NAD83 BEARING OF N88°59'25"E ALONG THE SOUTH LINE OF SAID WEST HALF, A DISTANCE OF 1050.25 FEET; THENCE N00°55'53"W PARALLEL WITH THE EAST LINE OF SAID WEST HALF, A DISTANCE OF 130.00 FEET; THENCE N39°40'12"E, A DISTANCE OF 315.00 FEET; THENCE N00°55'53"W PARALLEL WITH THE EAST LINE OF SAID WEST HALF, A DISTANCE OF 520.00 FEET; THENCE N27°22'28"W, A DISTANCE OF 643.00 FEET; THENCE S89°06'15"W PERPENDICULAR TO THE WEST LINE OF SAID WEST HALF, A DISTANCE OF 668.00 FEET; THENCE N00°53'45"W PARALLEL WITH SAID WEST LINE, A DISTANCE OF 140.88 FEET; THENCE S89°06'15"W PERPENDICULAR TO SAID WEST LINE, A DISTANCE OF 300.00 FEET TO SAID WEST LINE OF SAID WEST HALF; THENCE S00°53'45"E ALONG SAID WEST LINE, A DISTANCE OF 1607.81 FEET TO THE POINT OF BEGINNING;

EXCEPT BEGINNING AT THE SOUTHWEST CORNER OF SAID SOUTHWEST QUARTER; THENCE N88°59'25"E ALONG THE SOUTH LINE OF SAID SOUTHWEST QUARTER A DISTANCE OF 208.70 FEET; THENCE N00°53'45"W, 253.70 FEET, THENCE S88°59'25"W, 208.70 FEET TO THE WEST LINE OF SAID SOUTHWEST QUARTER; THENCE S00°53'45"E, ALONG SAID WEST LINE A DISTANCE OF 253.70 FEET TO THE POINT OF BEGINNING OF EXCEPTED TRACT.

Request the City of Andover to annex to the corporate limits of said City the above-described real property, pursuant to K.S.A. 12-520(7), and under the general authority of K.S.A. 12-520.

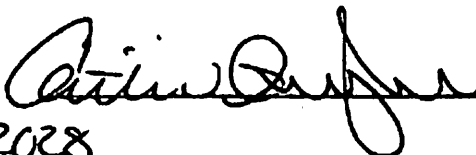
This petition signed the 15th day of September, 2025.

Green Meadow Property, LLC
A Kansas Limited Liability Company

 Member
Blake A. Guthrie

STATE OF KANSAS, COUNTY OF SEDGWICK ss,

This instrument was acknowledged before me this 15 day of September 2025
Blake A. Guthrie 2025 by Blake A. Guthrie as Member of Green Meadow
Properties, LLC.

 Notary Public

My Commission Expires 02/27/2028

