

(Resolution published at www.andoverks.gov on January 31, 2026)

RESOLUTION NO. 25-32

A RESOLUTION INDICATING THE INTENT OF THE GOVERNING BODY OF THE CITY OF ANDOVER, KANSAS TO ANNEX CERTAIN LAND PERSUANT TO K.S.A. § 12-520(a)(4) AND 12-520a.

WHEREAS, each tract contained within the real property described below (the “Property”) lies within or mainly within the City of Andover, Kansas, (the “City”) and has a perimeter with the City boundary line of more than 50%;

WHEREAS, pursuant to § 12-520(a)(4) and 12-520a, the City intends to annex the Property and finds that such annexation is advisable, desirable, beneficial, and in the interest of the public; and

WHEREAS, the governing body of the City previously adopted a resolution setting a public hearing for December 9, 2025, regarding the annexation of the Property, and the governing body desires to readopt the intent to annex and set a new public hearing to ensure proper notice to all interested parties in accordance with K.S.A. 12-520a.

NOW, THEREFORE, BE IT RESOLVED BY THE GOVERNING BODY OF THE CITY OF ANDOVER, KANSAS:

SECTION 1. The governing body of the City hereby indicates its intent to annex the following property into the boundaries of the City:

BEGINNING AT A POINT 100.0 feet East and 50.0 feet South of the Northwest Corner of the West half of the East half of the Northeast Quarter of Section 29, Township 27 South, Range 03 E of the 6th P.M., Andover, Butler County, Kansas; thence South 385.6 feet; thence West 100.0 feet to the West line of said West half of the East half of the Northeast Quarter; thence South along said West line to the South line of the Northeast Quarter; thence East along said South line to the East line of said Northeast Quarter; thence North 288.0 feet; thence West to the East line of said West half of the East half of the Northeast Quarter; thence North 2034.35 feet; thence West 225.0 feet to centerline of road per L.W. Newcomer survey dated August 14, 1953; thence North 280.0 feet; thence West to the POINT OF BEGINNING.

(the “Property”). A depiction of the Property is attached hereto as Exhibit “A”.

SECTION 2. The plan of the City for the extension of services to the Property, as required by K.S.A. 12-520b, and amendments thereto, is available for inspection during regular office hours in the office of the City Clerk at Andover City Hall, 1609 E. Central Ave., Andover, Kansas 67002.

SECTION 3. Pursuant to K.S.A. 12-520a(a)(1), the Governing Body of the City will hold a public hearing to consider the annexation of the Property on February 10, 2026, at 7:00 p.m., or as soon thereafter as practicable, at Andover City Hall, 1609 E. Central Ave., Andover, Kansas 67002. The Governing Body of the City hereby determines that adequate facilities for said public hearing are not available at the Property.

SECTION 4. Pursuant to K.S.A. 12-520a(c), the City Clerk shall (i) mail a certified copy of this Resolution, together with Exhibit "A", by certified mail to each owner of land within the Property, the Board of County Commissioners of Butler County, Kansas, the governing body of Bruno Township, Butler County Fire District No. 1, Butler Rural Water #5, the President of Butler Community College, the Board of Education of U.S.D. 385, City of Andover Planning Commission, South Central Kansas Library System, Watershed District No. 60, and any other political or taxing subdivision, all not more than 10 days following the date of adoption of this Resolution, (ii) cause this Resolution, together with Exhibit "A", to be published on the City of Andover website not less than one week and not more than two weeks prior to the date fixed for the public hearing.

[Remainder of page intentionally left blank]

PASSED, ADOPTED AND APPROVED by the Governing Body of the City of Andover,
Kansas this 9th day of December, 2025.

CITY OF ANDOVER, KANSAS

[seal]


ATTEST:

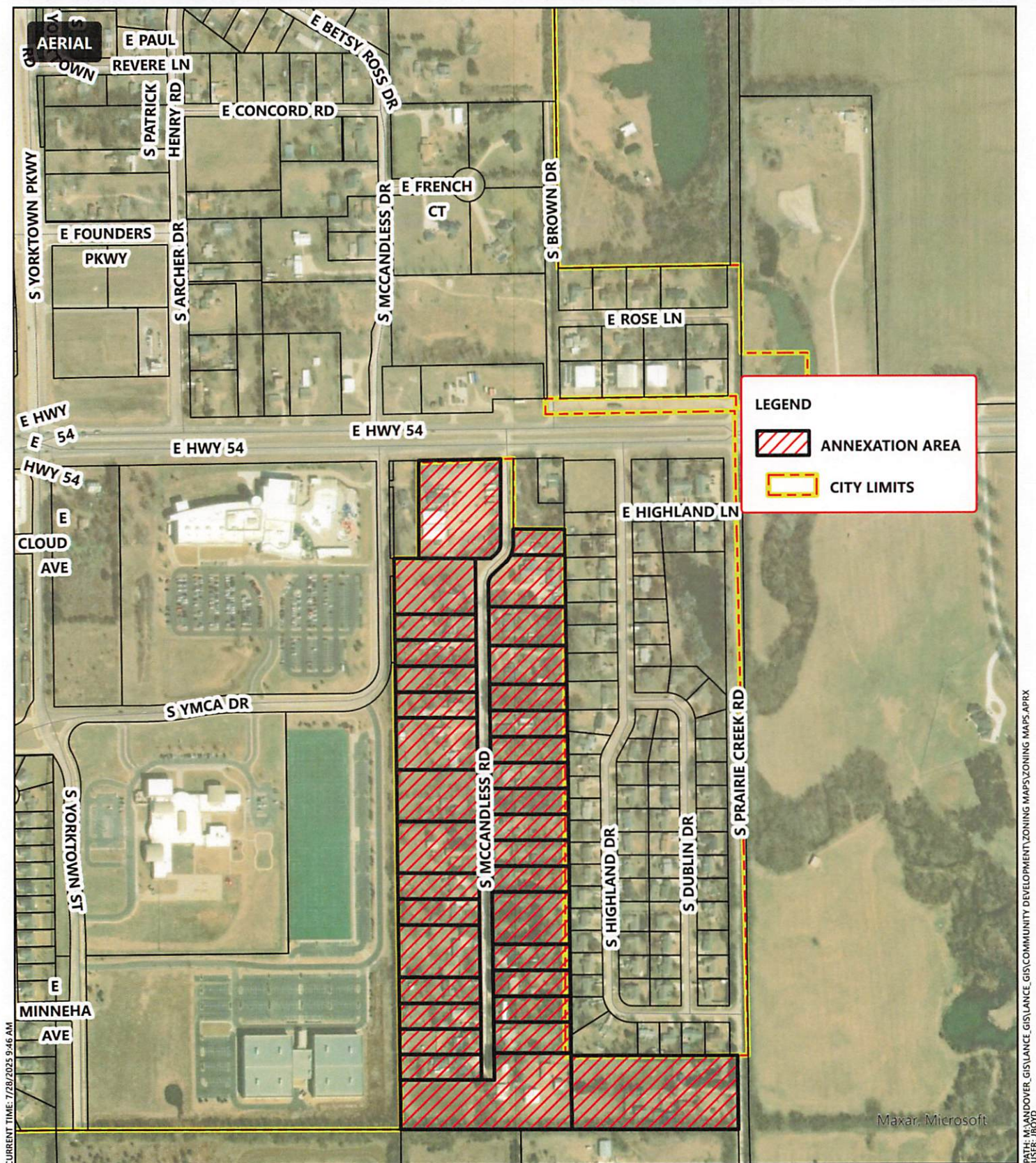


By


Ronnie Price, Mayor

By


Dana Engstrom, City Clerk



0 300 600 900 1,200 FEET

EXHIBIT A: ANNEXATION AREA

IT IS UNDERSTOOD THAT WHILE THE CITY OF ANDOVER GIS/MAPPING DEPARTMENT HAS NO INDICATION AND/OR REASON TO BELIEVE THAT THERE ARE INACCURACIES IN INFORMATION INCORPORATED IN THE MAP, THE CITY OF ANDOVER MAKES NO WARRANTY OR REPRESENTATION, EITHER EXPRESSED OR IMPLIED, WITH RESPECT TO THE INFORMATION, OR DATA DISPLAYED.