



2023

ACTIVITIES GUIDE



PARKS & RECREATION



TABLE OF CONTENTS

3 - 4 | CALENDAR & INFORMATION

5 - 8 | SPORTS

9 - 15 | PARKS

16 - 21 | EVENTS

22 - 24 | FACILITY RESERVATIONS

25 - 26 | LIBRARY & GOLF COURSE

Thank you to our
community partners!

- AARTI
- Andover Stormwater
- Ballet in the Park
- Butler County Cert
- Capitol Federal
- Childstart
- Ducks Flying Disc
- Evergy
- FestivalCT
- ICI Insurance
- Kansas Wildlife
- KETCH
- KEYN
- Music Theatre Wichita
- NewSpring Church
- Oaks Golf, LLC
- Platform Promotions
- Play It Again Sports
- Shakespeare in the Park
- & many more!



andoverparksandrecreation
CityofAndoverKS

2023 CALENDAR

JANUARY

- 2 City Hall offices closed
- 16 City Hall offices closed
- 21 Disc Golf tournament

FEBRUARY

- 20 City Hall offices closed

MARCH

APRIL

- 8 Disc Golf tournament
- 29 One year tornado anniversary event

MAY

- 29 City Hall offices closed
- 31 Music Theatre Wichita Rock of Ages

JUNE

- 1-4 Music Theatre Wichita Rock of Ages
- 10 Police and Fire Community Cook Out
- 17 Taco Fest
- 18 Shakespeare in the Park
- 25 Movie in the Park Corvette Blitz

JULY

- 4 City Hall offices closed
- 8 Golf tournament
- 30 Movie in the Park

AUGUST

- 5 Burger Battle
- 27 Movie in the Park

SEPTEMBER

- 4 City Hall offices closed
- 10 Shakespeare in the Park
- 19 NewSpring Church Concert
- 23 Ballet in the Park
- 29 Greater Andover Days
- 30 Greater Andover Days

OCTOBER

- 1 Greater Andover Days
- 7 Childstart Family Fest
- 22 Movie in the Park

NOVEMBER

- 10 City Hall offices closed
- 23 City Hall offices closed
- 24 City Hall offices closed

DECEMBER

- 14 Hometown Christmas
- 25 City Hall offices closed
- 26 City Hall offices closed

MARK YOUR CALENDARS!

KEYN Concerts in the Park at the Capitol Federal Amphitheater®

June 16, 23, 30 & July 7

INFORMATION

City Hall Hours of Operation:

Monday - Friday, 8 a.m. - 4:30 p.m.

Register:

To sign up for a program, please visit
www.andoverks.com/recreation

Questions:

316.733.1303 ext: 421

Email ayanez@andoverks.com if you would like to be included on the email notification list for all program registrations and promotions.

Refund Policy:

Visit www.andoverks.com/recreation for refund policies for specific programs, sport activities, and more.

Acronyms to know:

AARTI - Andover Augusta Rails to Trails Initiative who is in charge of the Redbud Trail

ACC - Andover Community Center, located at 1008 E. 13th Street

WHJBSL - Wichita Heights Junior Baseball/Softball League, the 10U-15U teams

8U - 7-8 year old machine pitch

GOTR - Girls on the Run

SUBSCRIBE
TODAY AND
SAVE 20%
It's like getting a
show **FOR FREE!**

EXPERIENCE 5 BROADWAY CALIBER SHOWS IN WICHITA
and instantly get up to **\$72 off** with an **MTWichita season subscription.**



Music Theatre Wichita dances into its second half-century of Broadway-scale productions in 2023, featuring five superb musicals. Become a season subscriber and receive priority seating before single tickets go on sale, free ticket exchanges, and savings of 20% over the cost of single tickets.



DEFINITELY BROADWAY
— UNIQUELY WICHITA —

316.265.3107 | mtwichita.org

YOUTH SPORTS

BASEBALL, SOFTBALL & T-BALL

Registration is limited and opens January 1 - March 5. Jersey and hat are included with the registration fee.

T-Ball is \$50 for Andover residents and \$70 for non-residents. T-Ball games may be played on Tuesdays or Thursdays at 13th St Sports Park.

Wichita Heights Junior Baseball-Softball league is \$85 for Andover residents and \$105 for non-residents. Practice will begin on April 3 with games running

from May 1 - July 14.

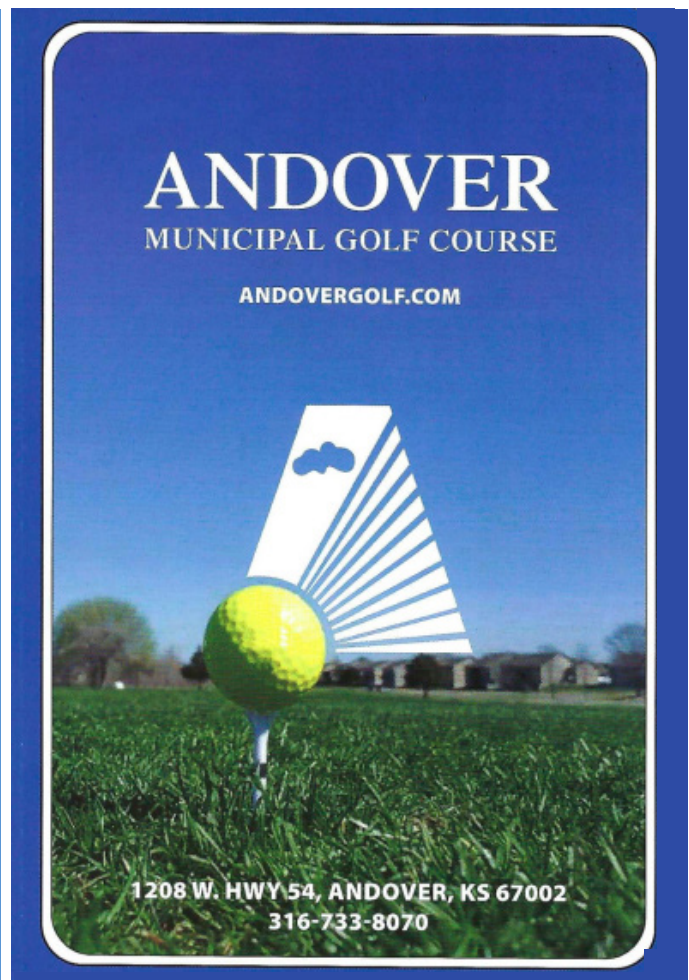
Divisions: 7-8 year old baseball & softball (machine pitch), 9-10 year old baseball & softball, 11-12 year old baseball & softball, 13-14 year old baseball, 13-15 year old softball

WHJBSL games may be played any day Monday - Friday. Games are played in Andover, Bel Aire, Towanda, El Dorado, Park City, Valley Center, Whitewater, and Newton.

T-Ball & WHJBSL: Coaches may

register a full team with a minimum 70% of the roster who either live within Andover city limits or attend a USD 385 school. All individual registrants will be placed on teams formed by a draft. Teams will have one weekday and one weekend practice during the preseason. Once games begin, teams will have one weekend practice.

- Cheapest rates in the area
- 12 & under play free!
- Ride in comfort in our new cart fleet
- Open every day there is decent weather for golfing!
- Managed by Oaks Golf



YOUTH SPORTS



FLAG FOOTBALL

Registration opens the first Monday of June and will close the last Sunday of July. 2023 game dates are to be determined. Practice will start the week after USD 385 resumes school after

summer break.

Registration fees are \$55 for Andover residents and \$75 for non-residents. Jersey is included with registration fee.

Teams will have one week day

practice. Games may be held on Tuesday evening, Thursday evening, or Saturday morning between Andover, Bel Aire, and Valley Center.

VOLLEYBALL

Registration opens the first Monday in June and closes the final Sunday of July 2023. Game dates will be determined. Practice will start the week after USD 385 resumes school after summer break.

Divisions: 3rd-4th grade girls,

5th-6th grade girls

Registration fees are \$55 for Andover residents and \$75 for non-residents. Jersey is included with registration fee.

Teams will have one week day practice and games will be held on Saturday mornings. Games may

be played in Andover, Belle Plaine, Derby, Douglass, Rose Hill, Central Christian Academy, or Wichita Independent school.

Teams will have a 6 week (12 game) regular season followed by a post season tournament.

BASKETBALL

3rd-4th grade boys and girls,
5th-6th grade boys and girls

Registration fees: \$55 Andover residents, \$75 non-residents. Jersey is included with registration fee.

Practice will begin the week after

USD 385 Thanksgiving break.

Teams will have one week day practice and one weekend practice during the preseason. Once games begin, teams will have one week day practice.

Games are held on Saturday

mornings. Games may be held in Andover, Belle Plaine, Douglass, or Rose Hill. Teams will have a 6-game regular season followed by a post season tournament.

SPORTS/PROGRAMS



PICKLEBALL

Available for all ages and skill levels. Pickleball sessions are all open play. Pickleball memberships are \$20/individual and are valid for the calendar year. Guests are allowed one free visit before required to pay membership fees. Pickleball is held at the Andover Community Center, 1008 E 13th St. Schedule is: Tuesday/Friday, 9 a.m. - noon Wednesday/Sunday, 6 - 9 p.m.

CORNHOLE

Doubles of all ages are welcome. There will be four seasons including spring, summer, fall, winter. Doubles must have the same partner each week. \$30/team. Season will be five weeks long with a four-week regular season, and one week with the play offs. Cornhole will be held at the Andover Community Center. Registration opens in April and is \$25/player.

TWIRLING

Come explore baton twirling in our beginning class for ages 7-12 starting August 29 - October 10. Students will have fun learning the basics of baton twirling, including figure-8s, finger twirls, and tosses. Advanced twirling will begin October 17 - December 5. Students will have an opportunity for a public performance in each session.

KICKBALL

Kickball league will start July 26 - August 30 on Wednesdays, 6 - 8 p.m. in Andover Central Park, east of the Capitol Federal Amphitheater®. 3rd - 6th graders can register individually or as a team starting in April. Registration is \$10/player.

ADULT CARDIO

Adult Cardio Line Dance is a fun way to exercise and meet new people. This program is seasonal and meets two evening a week.

GIRLS ON THE RUN

Girls On The Run will have a spring and fall season. Girls on the Run inspires girls of all abilities to recognize their individual strengths, while building a sense of connection in a team setting. Volunteer coaches facilitate lessons that blend physical activity with life skill development to enable girls to adapt to whatever comes their way. At the end of the season, the team completes a 5K together, which provides a tangible sense of accomplishment and sets a confident mindset into motion.

SQUARE DANCE

Adults only. Come out and participate in the square dance program on Mondays, 7 - 9 p.m. Contact Fred Trujillo at 316-218-0501 for more information.

**Keep posted on
additional season
dates on our
Facebook page.**

Andoverparksandrecreation

Sign up online at www.andoverks.com/recreation



Calling all coaches

Coaches are allowed to bring in their own roster
or draft individual registrants to their team.

Coaches are allowed to select their own
practice days and times for all sports.

Contact:
Austin Yanez
ayanez@andoverks.com

SEASONAL JOBS

Looking for: baseball & softball umpires, football officials,
volleyball officials, basketball officials, and scorekeepers
for volleyball and basketball

Seasonal staff is scheduled based on their own
availability and paid bi-weekly. Staff must be
14 years old or older.

Contact: Austin Yanez, ayanez@andoverks.com



PARKS

CENTRAL PARK

Andover Central Park is in the heart of Andover at 1607 E Central, home of City Hall and the Andover Public Library and is filled with things to do from business to recreation.

This 80-acre park features a gorgeous fishing lake, Lake George, which is ADA accessible and stocked by the Kansas Department of Wildlife and Parks. The Community Fisheries Assistance Program (CFAP) improves fishing opportunities at community lakes.

The state leases the fishing rights from over two hundred community lakes statewide. Kansas fishing license regulations apply and harvest and creel limits are posted at the lake and can be found online as well. No swimming/boating is allowed.

Central Park is also home to an 18-hole disc golf course that winds through trees and throughout Central Park. With challenging shots over the water and around obstacles, the course hosts several tournaments every year.

Central Park has plenty of rental shelters for birthday parties, family reunions, and picnics or get togethers. There are also restrooms open 24/7 along with a FEMA rated storm shelter open at all times. The new playground was added in April 2022 and is available for play.

Central Dog Park is open. It allows a section for large and small dogs. It has city water available for dogs to use. Waste bags are offered free of charge along with trash receptacles.



PARKS

Andover Central Park

1607 E Central

- Gazebo
- Walking paths
- Lake George
- Picnic Shelters
- Conference Cabin
- Capitol Federal Amphitheater®
- Andover Public Library
- Andover City Hall
- Disc Golf Course

13th Street Sports Park

1008 E 13th Street

- Andover Community Center
- Baseball and Softball diamonds
- Multi-purpose fields (soccer, football, t-ball)
- Basketball court
- Sand volleyball pit
- Horseshoe pits
- Tennis courts
- Picnic Shelters
- Access to Redbud Trail

Redbud Trailhead Park

Located at the intersection of Harrison and Main

Neighborhood & Mini Parks

There are three mini parks and one neighborhood park.

- Andover Cornerstone Park
- Andover Heights Mini Park
- Andover Village Park
- Williamsburg Park



PARKS

REDBUD TRAIL

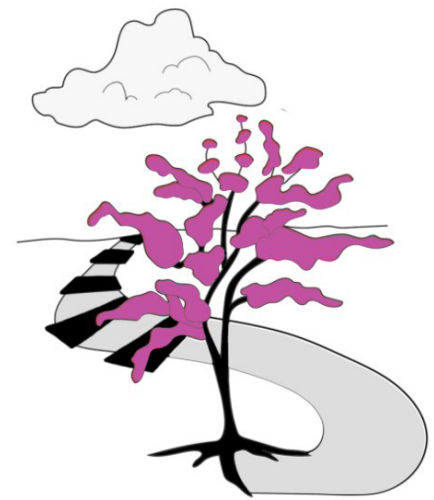
Andover Augusta Rail Trail Initiative, Inc. (AARTI) partners with local communities to strengthen and maintain the Redbud Trail. AARTI helped develop and currently maintains the miles of the Redbud Trail.

The Redbud Trail travels along the Burlington Northern Santa Fe rail corridor. The rail corridor stretches 11 miles in the City of Wichita, of which six miles are paved concrete. The trail passes city parks, employment hubs, the Wichita State University campus, and intersects with the K-96 bicycle path. The Redbud Trail continues

east to Butler County, where the City of Andover has a 10-foot-wide concrete hike/bike path to 13th Street.

From 13th Street to US-400/54 the City of Andover partnered with AARTI to develop the Redbud Trail with crushed limestone. AARTI is working closely with local communities to expand the Redbud Trail to the City of Augusta in the future.

To get involved, volunteer, or learn more about upcoming events, please visit redbudtrail.org



Redbud Trail

Andover-Augusta Rail Trail Initiative

NEIGHBORHOOD PARKS

In addition to the 13th Street Sports Park and the Andover Central Park, Andover has several smaller parks located throughout the community.



Andover Cornerstone Park

Andover Cornerstone Park is the city's newest neighborhood park. It is located at the corner of Cornerstone Parkway and Sandstone Street, at the roundabout.

- Park benches
- Covered picnic table
- Playground equipment for all ages
- Pickleball court

Andover Village Mini Park

Andover Village Mini Park is a greenbelt area with playground equipment

- 155 S. Village
- Picnic table
- Park benches
- Sand box
- Swing set

Andover Heights Mini Park

1912 N. Marc

- Picnic tables
- Park benches
- Sand box
- Swing set

Williamsburg Mini Park

325 S. Williamsburg

- Picnic table
- Park bench swing
- Sand box with mechanical diggers
- Basketball court

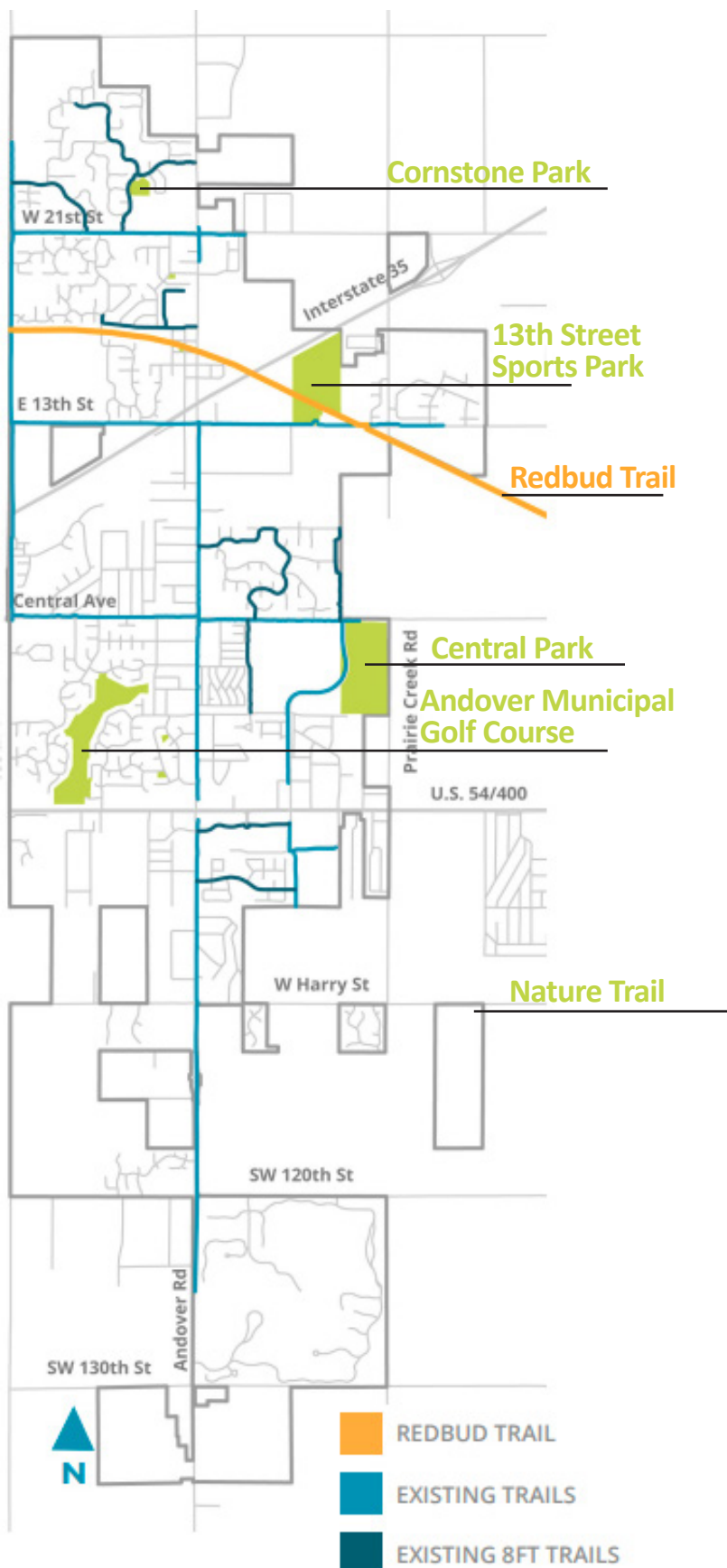
Redbud Trailhead Park

1601 N Main Street

It serves as a starting, stopping or resting point for users of the Redbud Trail which extends west into Wichita and east to US54.

- Shade structure
- Historical sign
- Parking
- Restroom coming soon

PARKS



Sharing the road

“On the Left”

When using the Redbud Trail you need to speak up! Using the term “On The Left” signals other trail users you are approaching. This is a very important tool to help avoid collisions with other trail users.

Weather or not

The Redbud Trail is not an all-weather trail, meaning that when the trail is wet and trail activity continues, it causes damage to the quality of the trail. We recommend avoiding the trail when wet or stick to the sides.

Keep to the right

Trail flow is similar to the rules of the road. When using the trail slower traffic keeps to the right, allowing faster-moving traffic to past on the left. This causes the trail flow to remain unclogged and limits accidents.

Wildlife

Be aware that since a section of the Redbud Trail is outside city limits there is wildlife that inhabits that area. Be cautious of your surroundings so as to not disrupt their environment. Do not feed, touch, interact, harass, or harm the wildlife.

Be a good neighbor

Be respectful of adjacent property owners’ land and keep the trail clean with no litter.

Yielding

On the trail, individuals need to yield to others to avoid accidents. Faster traffic must yield to slower traffic.

Vigilance

When on the Redbud Trail, it is a personal responsibility to stay alert and to look over your shoulder frequently. It is a good idea when using headphones to use a low volume in one ear.

PARKS

13th STREET PARK



We look forward to bringing you all of these amenities in 2024:

- Destination Playground
- Multipurpose Field
- Concessions
- 5 Ball Diamonds
- Dog Park
- 1+ Mile of Trails to tie into Redbud Trail
- Splash Pad
- Restrooms

CORNERSTONE NEIGHBORHOOD PARK

Andover Cornerstone Park is the city's newest neighborhood park. It is located at the corner of Cornerstone Parkway and Sandstone Street, at the roundabout. It has Park Benches, a Covered picnic table, and Playground equipment for all ages.

ANDOVER HEIGHTS MINI PARK

Andover Heights Mini Park is located in the Andover Heights Addition by the intersection of Marc and Aaron. It has a Picnic Table, Park Benches, a Sand box, and a Swing set.

ANDOVER VILLAGE MINI PARK

Andover Village Mini Park is a greenbelt area with playground equipment in the Andover Village Addition on Village Road. It has a picnic table, benches, a sand box, and a swing set.

MUNICIPAL GOLF COURSE

Andover Municipal Golf Course is a public 9-hole, par 33 course. It was established in 1988 and is a community golf course. This mature course features six par 4s and three par 3s and will accommodate golfers of all skill levels. Andover Municipal Golf Course is a great place to hone your golfing skills and is very user friendly at very competitive prices.

THE PARK SYSTEM

Andover is situated just outside of Wichita, KS and is known for its vibrant recreational opportunities, events and highly sought-after school system. In addition, the City offers 7 parks and 1 municipal golf course that totals approximately 196 acres of parkland. These range in size and use, with Central Park being the largest park in the system with 70 acres to Redbud Trailhead Park with 0.16 acres as the smallest. Both offering very different amenities. Andover offers a little bit of everything! Each mini park in the system offers a different type of playground

for more passive use, while Central Park is a destination park for big events, fishing, and active recreation. 13th St Sports Park houses the City's sports facilities, the Andover Community Center, volleyball and tennis courts; making it Andover's active recreational park for people of all ages. This master plan provides a strategic action plan for the City of Andover to follow for the next 10 years based on community needs and the analysis that was conducted city-wide. Learn more about the Andover park system and the master planning process in the following chapters.

13TH STREET SPORTS PARK

The 13th Street Sports Park is located at 1008 E. 13th Street and has many recreational facilities. The tennis courts are on 13th Street west of the main park entrance with a picnic shelter, charcoal pit, restrooms and a large area for all types of group games / sports.

REDBUD TRAILHEAD PARK

The Redbud Trailhead Park is located at 1601 N. Main St. It serves as a starting, stopping or resting point for users of the Redbud Trail which extends west into Wichita and east to US 54/400. It has a Shade Structure, Historical Signage, and Parking.

CENTRAL PARK

As you drive into the beautiful 70-acre park, you will notice the nature/walking path (approximately 1.25 miles) that winds around Lake George. The lake is stocked with fish by the Kansas Department of Wildlife, Parks, and Tourism. There are several picnic areas on the lake and a large shelter across the street from the Library. Next you will find a handicap-accessible playground for all ages. Further south into the park there is a dog park that opened in early 2016. A separate area for large and small dogs with fencing is provided for your four-legged family members. Open areas and another hiking path complete the park's amenities.

WILLIAMSBURG MINI PARK

Williamsburg Park is located at the corner of Williamsburg and Jamestown. It features a playground, picnic table, bench swing, sand box with mechanical diggers, and a basketball court.



Movies in the Park

UPCOMING MOVIES & DATES

All movies begin at 6 p.m. on Sundays in Central Park and are free to the public.

June

25 Family Camp

July

30 Top Gun Maverick

August

27 Paws of Fury

October

22 Nightmare Before Christmas



GREATER ANDOVER DAYS



food trucks, live music,
carnival, parade, & more

MARK YOUR CALENDARS: September 29 - October 1, 2023

For over 50 years, Greater Andover Days has celebrated our great community in Andover. We cannot wait to come together to celebrate this fall!

Each year, we celebrate fall with a festival of events including a parade, KidFest, craft and business expo, golf and disc

golf tournament, car show, concert and fireworks show, plus several other fun activities throughout the city.

Greater Andover Days continues to grow each year, just as Andover continues to grow. Our fun fall activities also bring in families and travelers from across the Wichita

region to enjoy the amenities our town has to offer.

Buttons can be purchased for \$3 leading up to the event and \$5 the day of the event onsite. A portion of the proceeds from buttons go to help a local nonprofit.

EVENTS



INDEPENDENT EVENTS

- Music Theatre Wichita, Wednesday, May 31 - Sunday, June 4
- Taco Fest, Saturday, June 17
- Corvette Blitz, Sunday, June 25
- Burger Battle, Saturday, August 5
- Newspring Church Concert, Tuesday, September 19
- Family Jam Fest, Saturday, October 7

Be sure to visit andoverks.com for a full calendar of events.

HOMETOWN CHRISTMAS

MARK YOUR CALENDARS: Thursday, December 14, 2023

On the second Thursday of December, Andover Central Park and surrounding buildings become a winter wonderland. The evening kicks off with a tree lighting ceremony on the plaza and the arrival of Santa Claus, followed by a variety of fun events including hay rack rides through a luminary lit path in the park, s'mores with Andover emergency responders, holiday themed crafts at the library, live music from Andover schools, pictures with Santa, and a

spectacular light show at Capitol Federal Amphitheater®.

In 2020, a tradition to coincide with Hometown Christmas was restarted – a holiday light decorating contest. Businesses and residents in Andover can enter to win cash prizes and bragging rights over their neighbors for the best decorations. Judging occurs in the first week of December, leading up to Hometown Christmas, and winners are announced during the festivities in Central Park that evening.

Andover Caring and Sharing benefits, annually, from this event through donations of new toys, staple and canned goods, as well as cash contributions from our very generous citizens. Caring & Sharing is a 501c3 nonprofit organization that provides area families with assistance in various ways, including gifts for kids and food for a special holiday meal in December. The celebration offers lifelong memories for those in attendance and the families that need it most.



The annual holiday light show takes place in Central Park Thanksgiving through New Years Day. It is FREE and open to the public

Enter our neighborhood holiday light contest starting in November.

Cash prizes awarded to winners!

EVENTS

CONCERTS IN THE PARK AT THE CAPITOL FEDERAL AMPHITHEATER®

CLASSIC HITS
103.7  KEYN



JUNE
16

JUNE
23

JUNE
30

JULY
7



Located in the heart of Central Park, the Capitol Federal Amphitheater® is a city operated, outdoor ADA accessible space that is great for festivals, concerts, special occasions, and weddings.

The Capitol Federal Amphitheater®, a 1,900 square foot outdoor venue, is the parks

most rockin' feature.

At capacity, it can seat 10,000 people. For private reservations and smaller events, the concrete landing at the front of the stage can accommodate up to 400 guests. More information on reserving the facility can be found at andoverks.com.

For event updates:
capfedamphitheater.com



Interested in volunteering?

We have opportunities for all ages! Email mschapaugh@andoverks.com.



FACILITY RESERVATIONS

WHERE CAN YOU HOST AN EVENT?

Capitol Federal Amphitheater®

Located in the heart of Central Park. Capitol Federal Amphitheater® is a city operated, outdoor ADA accessible space that is great for festivals, concerts, special occasions, and weddings. At maximum capacity, Capitol Federal Amphitheater® seats 10,000 people. For private reservations and smaller events, the concrete landing at the front of the stage can accommodate up to 400 guests.

Reservations at Capitol Federal Amphitheater® may utilize the stage and the upper and lower bowl seating areas. There is also a gated backstage area included with reservations. Reservations do not include an indoor space for inclement weather. Capitol Federal Amphitheater® is equipped with

a sound system and video screens that may be utilized for an additional fee. Full day reservations are available year-round.

The Conference Cabin in Central Park

Along Yorktown Road in Central Park, the Conference Cabin is a city operated, ADA accessible facility that is great for meetings, special occasions, and general use by the public. The Conference Cabin accommodates approximately 20 people. Hourly reservations are available year-round.

Andover Community Center

Located at the 13th Street Sports Park at 1008 E. 13th Street, The ACC is a city operated facility that is great for meetings, special occasions, and general use by the public. The large main room can

hold 200 people seated at tables or up to 300 people seated theatre style. Hourly reservations are available year-round.

Park Shelters

The Central Park Shelter, Central Park Gazebo, 13th Street Shelter and the Redbud Trail Head Shelter are free to reserve throughout the year.

Book 10 hotel nights at either of Andover's two hotels and get your meeting facility rental fee waived.

**TO BOOK ONLINE:
Visit [andoverks.com/facilities](https://www.andoverks.com/facilities)**



FACILITY RESERVATIONS

Facility	Time Period	Category 1	Category 2
Andover Community Center	Hourly	\$40	\$50
Andover Community Center	7 a.m. - noon	\$560	\$700
Capitol Federal Amphitheater® (<500)	7 a.m. - 12 a.m.	\$1,760	\$2,200
Capitol Federal Amphitheater® (>500)	7 a.m. - 12 a.m.	\$4,800	\$6,000
Capitol Federal Amphitheater® Large Event Package	7 a.m. - noon	\$6,400	\$8,000
Central Park Conference Cabin	Hourly	\$20	\$25
Central Park Conference Cabin	7 a.m. - 12 a.m.	\$280	\$350
Central Park Disc Golf Course	5 hours	\$200	\$250
Central Park Disc Golf Course	7 a.m. - 12 a.m.	\$280	\$350
Central Park Gazebo	Hourly	\$0	\$0
Central Park Main Shelter	Hourly	\$0	\$0
Central Park Public Land	7 a.m. - 12 a.m.	\$240	\$300
Cornerstone Park Public Land	7 a.m. - 12 a.m.	\$240	\$300

CATEGORY 1: 501 (c) not-for-profit groups, individuals residing within the incorporated limits of the City and City employees

CATEGORY 2: Individuals and for-profit businesses located or residing outside of the incorporated limits of the City



COMING SOON

Tornado recovery efforts are currently underway in Central Park. Our dog park, disc golf course, and trails have reopened.

The Governing Body and City Staff are hard at work determining the best ways to replace lost facilities moving forward.

ANDOVER PUBLIC LIBRARY

PROGRAMS AND ACTIVITIES

- Children's story times
- Summer Reading program June through July
- Game nights (Bunco, Bingo)
- Yoga, including gentle and chair yoga
- Book clubs
- Programs and events for all ages
- Wednesday Mahjong
- Spring Break activities
- Comic Clubs

AMENITIES

- Books, movies, audio books, e-books, games and much more
- Public computers and WiFi
- Room rentals
- Books sales
- Disc golf bags to check out

The Friends of the Andover Library help promote and support the library. This group offers adult game nights, family events, programs, classes and activities for everyone.

The group also funds the summer reading program and grants for library staff. Many new programs were started, including monthly Bunco night, Wednesday Yoga and Mahjong. In addition, three Whale drums were added by the entrance of the library along with 2022 American Girl doll checkouts.

Donations, new members and new friends are always welcome. For more information email FriendsAndoverLibrary@gmail.com.



HOURS OF OPERATION

Monday -Thursday:
9 a.m. - 8 p.m.

Friday: 9 a.m. - 5 p.m.

Saturday: 9 a.m. - 3 p.m.

Sunday: closed

1511 E Central Ave
Andover, KS 67002
316-558-3500

For more information,
please visit:

[www.andover
library.org](http://www.andoverlibrary.org)



GOLF COURSE

Andover Municipal Golf Course is a public 9-hole, par 33 course. It was established in 1988 and is a community golf course. This mature course features six par 4s and three par 3s and will accommodate golfers of all skill levels.

Andover Municipal Golf Course is a great place to hone your golfing skills and is very user-friendly at affordable prices. The course offers a variety of men's and women's leagues. Please inquire at the clubhouse for current offerings.

Walk ins are welcome, tee times available by phone.
Discounts are offered to Andover residents.

9 hole	weekday	weekend
Regular	\$13.00	\$15.00
Junior, Senior, Military/Veteran	\$12.00	\$14.00

18 hole	weekday	weekend
Regular	\$18.00	\$20.00
Junior, Senior, Military/Veteran	\$17.00	\$19.00

Annual pass	rates
Single	\$595.00
1st Additional Per Household	\$250.00
Each Additional Per Household	\$50.00
Senior (62 and over)	\$495.00
Junior (13 - 18)	\$495.00
Active Duty Military	\$495.00

Cart Rental
9 holes: \$11.00/rider
18 holes: \$15.00/rider



UPCOMING CITY TOURNAMENTS

Saturday,
July 8, 2023

Saturday,
September 30, 2023

andovergolf.com

COMING IN 2023:

- The Heritage opens
- Fishing Clinic
- 13th Street Sports Park construction will commence
- Additional wayfinding signage
- Burger Battle
- Multimodal trail network
- 5K Run



Andover Central Park

6,500

sq ft of public/indoor
reservation space

6

miles of
Redbud Trail

In 2022, over

28,000

attendees at the Capitol
Federal Amphitheater®

1

amphitheater

7

public
playgrounds

18

hole disc
golf park

1

public
dog park

over

220

acres in the parks and
recreation system

In 2022, over

1,000

participants in
team sports

95

sports
officials

4

group shelters
for reservation

